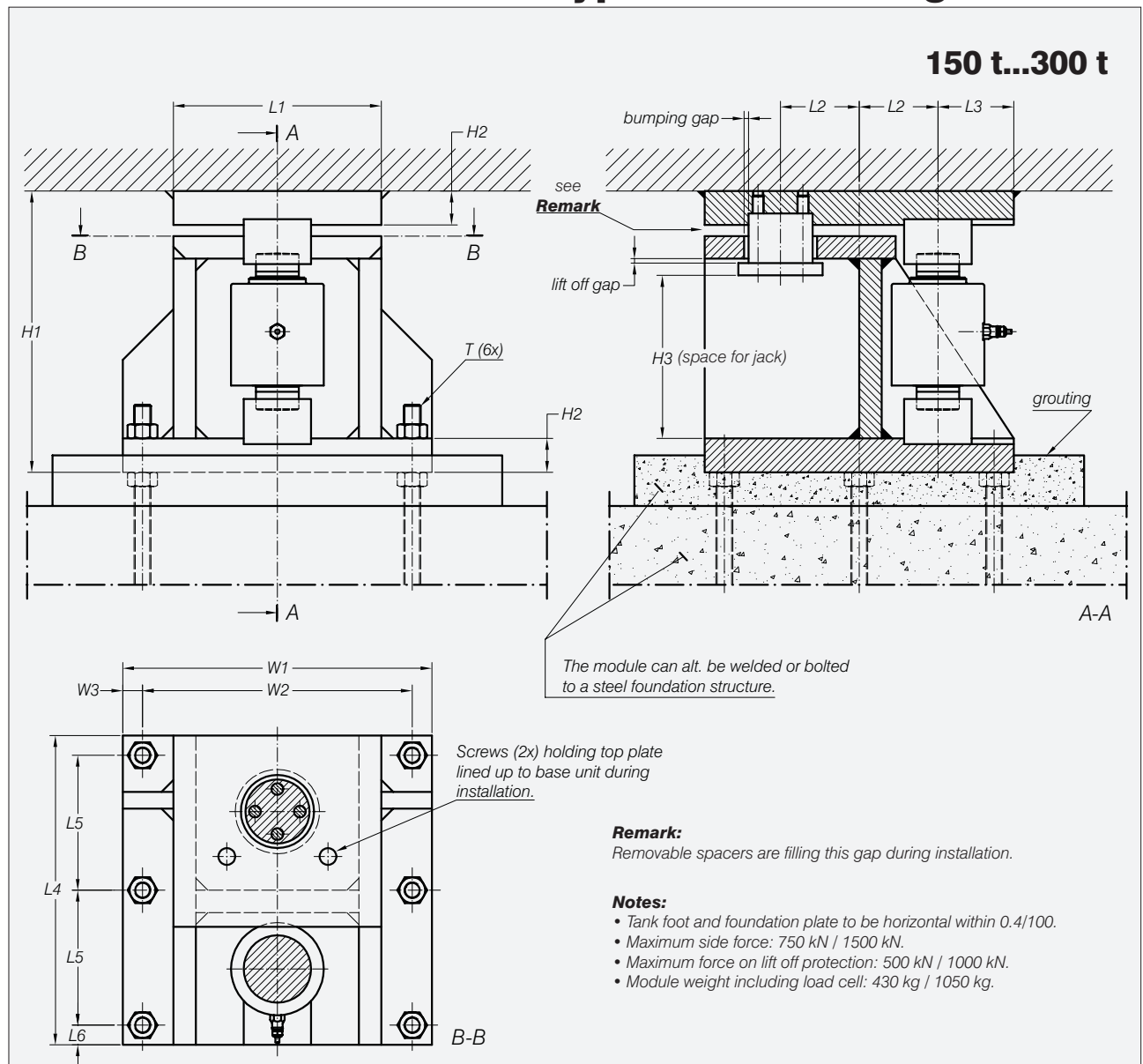


Type 55-01-12 Weigh Module



Load Cell Type	L1	L2	L3	L4	L5	L6	H1	H2	H3	W1	W2	W3	T
RC3-150 t	370	140	135	550	480	35	500	60	290	550	240	35	M30
RC3-300 t	490	180	190	740	640	50	700	80	415	740	320	50	M42

All dimensions in mm. Dimensions and specifications are subject to change without notice.
 Assembly drawings with installation instructions and CAD files for customer's own applications drawings are available on request.

Flintec load cell supports are designed to prevent unwanted forces from affecting load cell performance.

The Type 55-01-12 is a self aligning weigh module, with excellent load introduction.

The module is especially designed for using Flintec RC3 load cells in heavy silo weighing applications. The module incorporates an integrated bumper stop eliminating the need of using check links thereby offering highest possible precision.

The Weigh Module will be shipped completely pre-assembled.

Material: steel with primer.

Important Features

- Capacities 150 and 300 t.
- Very easy to install.
- Especially designed for heavy silo weighing.
- With integrated bumper stop for highest precision.
- With integrated lift off protection.
- Load cell replacement requires minimum lifting height.
- Units can be modified to suit individual requirements.