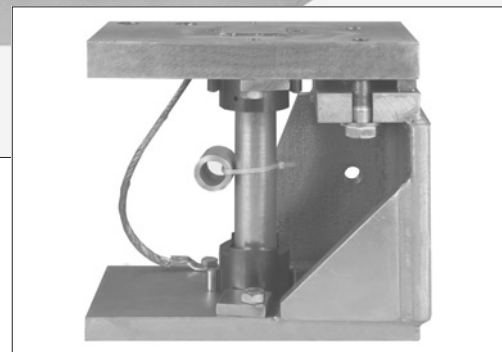


Type 55-01-09 Weigh Module

30 t...90 t


Weigh Module 55-01-09 with RC3 Load Cell



Pre-assembled module with dummy load cell

Flintec load cell supports are designed to prevent unwanted forces from affecting load cell performance.

The Type 55-01-09 is a self aligning weigh module, with excellent load introduction.

The module is especially designed for using Flintec rocker column load cells in hopper and tank weighing applications. The module incorporates an integrated bumper stop eliminating the need of using check links thereby offering highest possible precision.

The Weigh Module will be shipped completely pre- assembled including a dummy load cell; ready for installation by welding.

In case of horizontal forces from slow moving agitators etc., use the check link option (Can be added afterwards, would the need arise).

Material: steel, zinc plated; alternatively stainless steel.

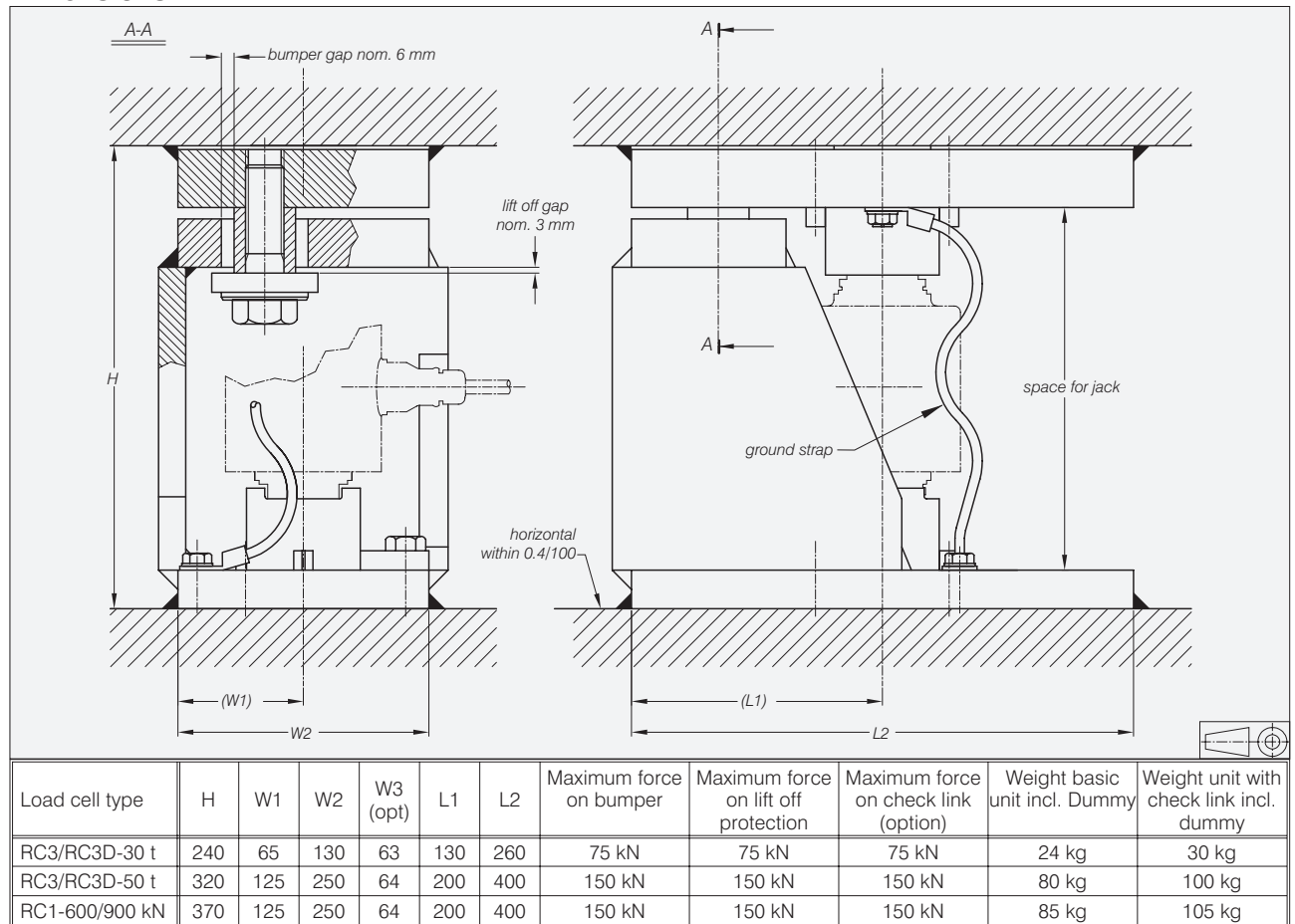
Important Features

- Capacities 30 t...90 t.
- Very easy to install.
- Especially designed for hopper and tank weighing.
- With integrated bumper stop for highest precision.
- With integrated lift off protection.
- Load cell replacement requires minimum lifting height.
- W&M certified.

Option

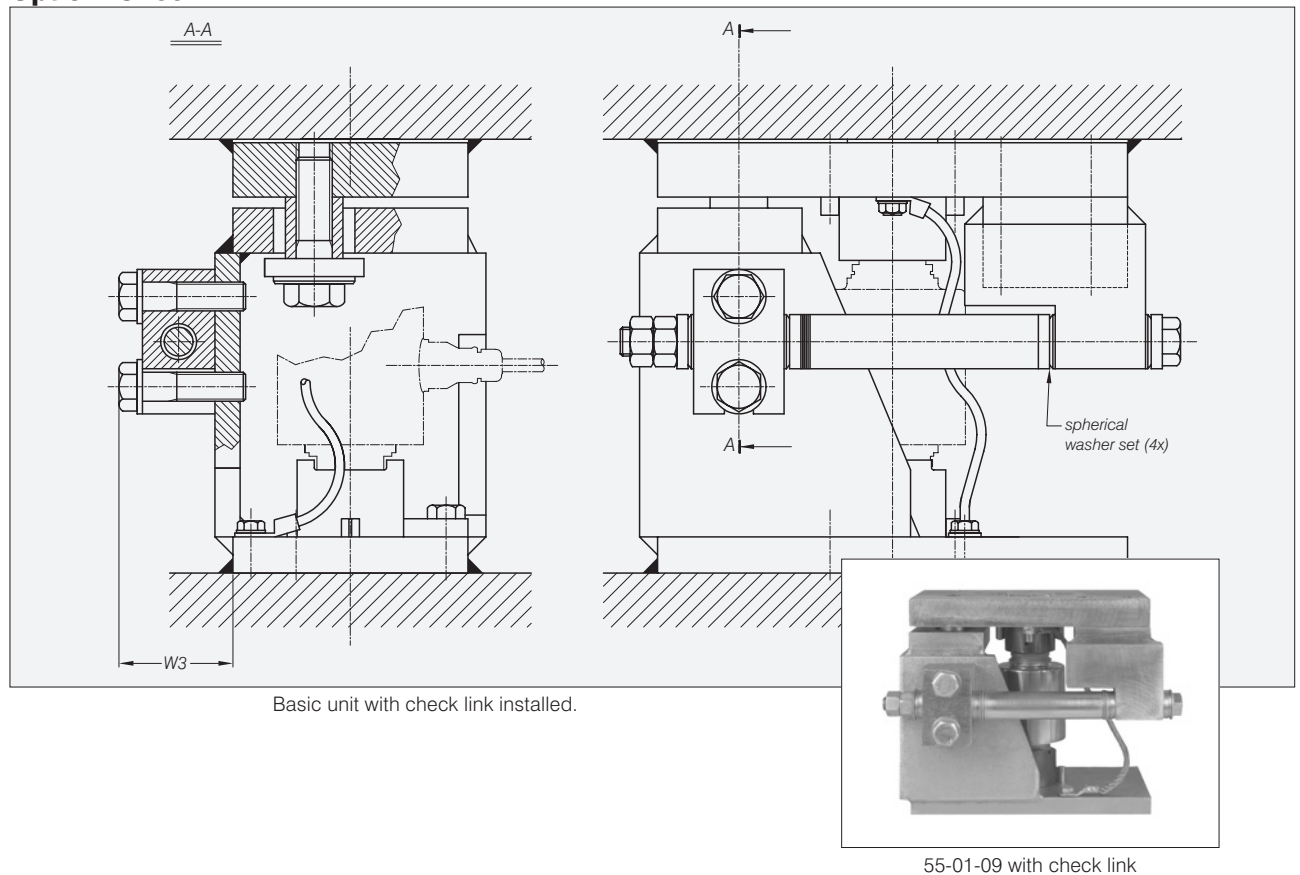
- Integrated check link.

Dimensions



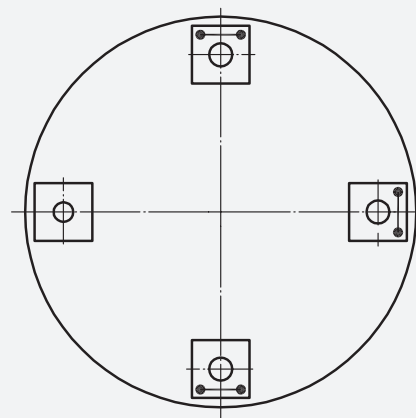
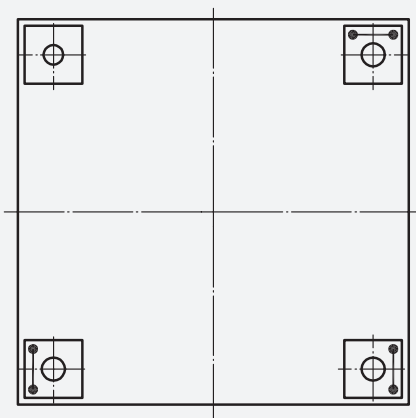
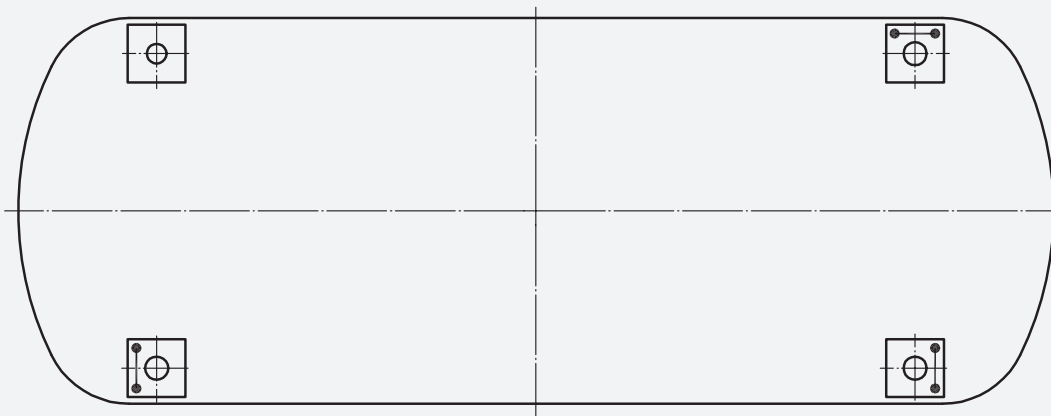
All dimensions in mm. Dimensions and specifications are subject to change without notice.
 Assembly drawings with installation instructions and CAD files for customer's own applications drawings are available on request.

Option: Check Link

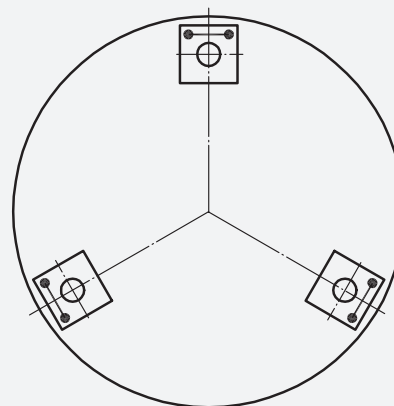
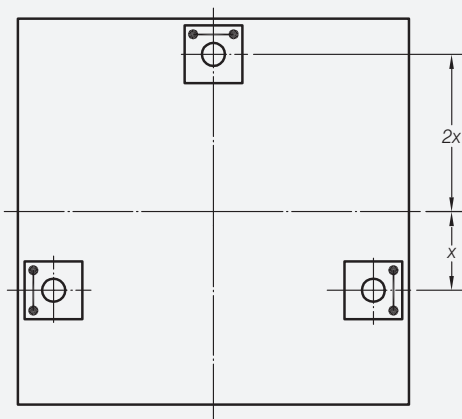


Check link orientation

4 LOAD CELLS



3 LOAD CELLS



drawing symbols



unit with check link



unit without check link