

Type 52-14 Weigh Module

200 kg...2 t



Weigh Module 52-14 with BK2 Load Cell

Flintec load cell supports are designed to prevent unwanted forces from affecting load cell performance.

The Type 52-14 weigh module with wire rope suspension offers very high accuracy.

Designed for platform, hopper and tank weighing; combining excellent load introduction with low profile design.

Designed for BK2 load cells (BK2-xxx kg-WR-Cx).

The Weigh Module will be shipped pre-assembled; ready for installation by bolting or welding.

For the lower capacities (200 kg, 500 kg and 1000 kg) an optional spacer is available making them the same height as the 2000 kg module.

Material: stainless steel.

Important Features

- Capacity range 200 kg to 2000 kg.
- All stainless steel.
- Low profile.
- Low cost.
- Very easy to install.
- Very rugged.
- Installation by bolting or welding.

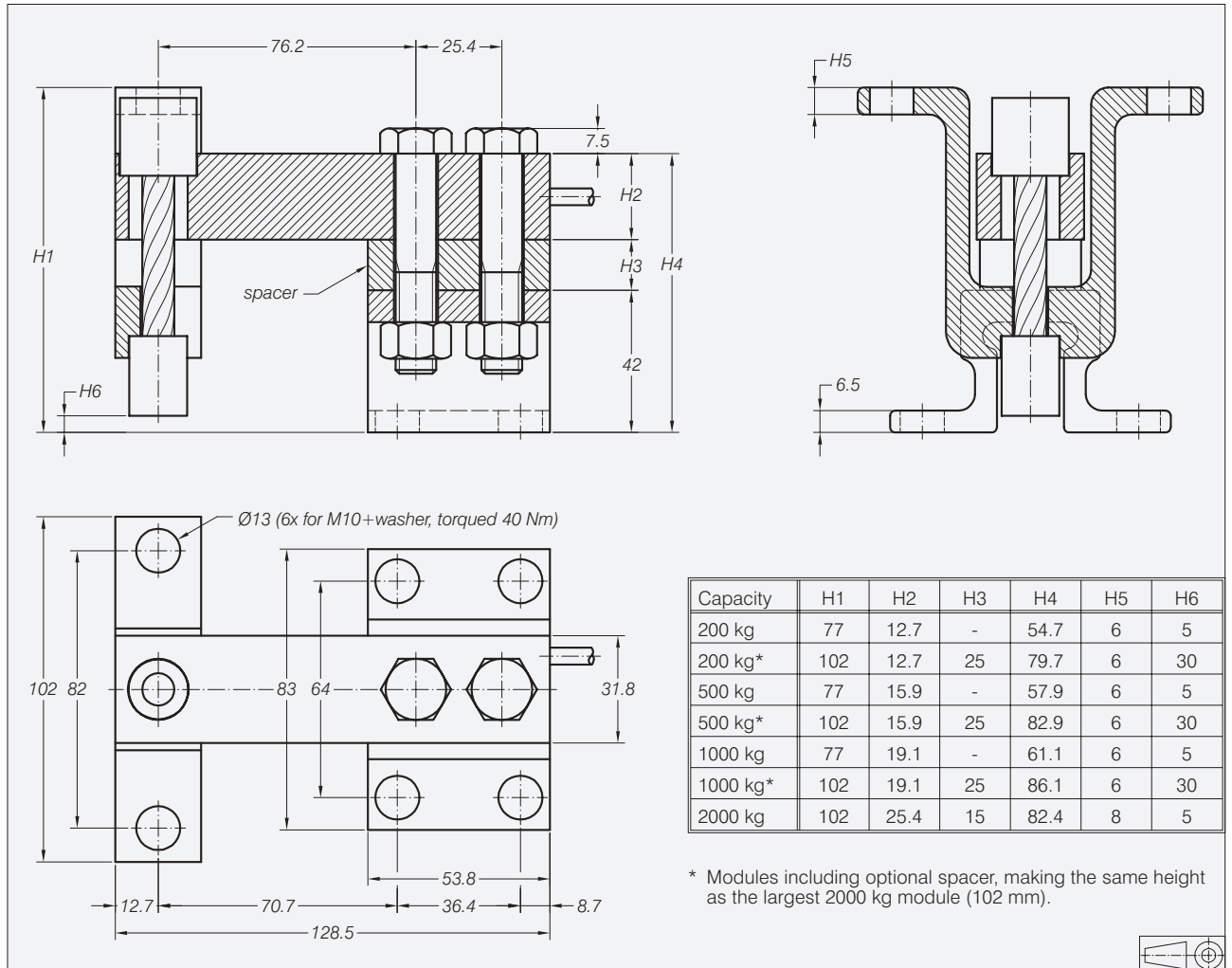
Option

- Spacer for equal height.

Accessories

- Welding plate top and bottom.
- Welding fixture.

Dimensions



All dimensions in mm. Dimensions and specifications are subject to change without notice. Assembly drawings with installation instructions and CAD files for customer's own applications drawings are available on request.

Weigh Module with welding plates

