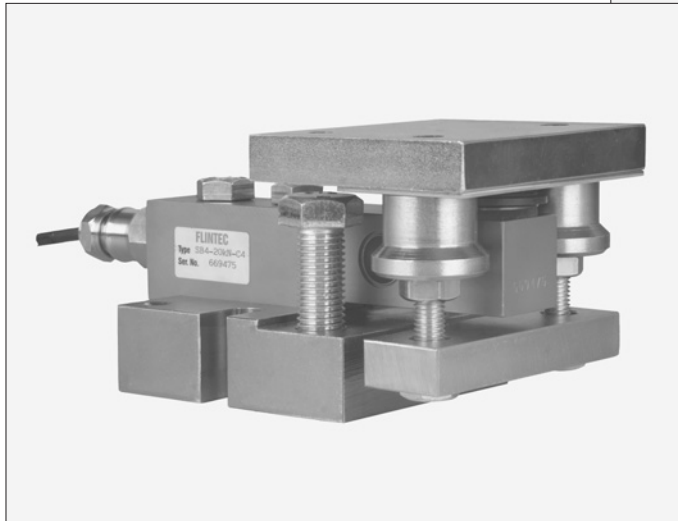


Type 52-13 Weigh Module

20 kg...10 t



2-Directional Weigh Module 52-13



3-Directional Weigh Module 52-13

Flintec load cell supports are designed to prevent unwanted forces from affecting load cell performance.

The Type 52-13 is a weigh module with sliding system designed for hopper, tank and mixer weighing; combining excellent load introduction with low profile design.

The system is available in 2 versions:

- 2-directional bumper module for standard applications,
- 3-directional bumper module for special applications.

The module includes bumpers, jacking bolt, lift off protection and a machined slot to prevent the load cell from sliding if subjected to high side forces. The design of these features making it extremely versatile and rugged.

Both variants can be used with free sliding modules.

Shipment is completely pre-assembled, ready for installation.

Especially designed for SB4, SB5, SB6, SB14 and SLB load cells.

Material: steel, zinc plated; alternatively stainless steel.

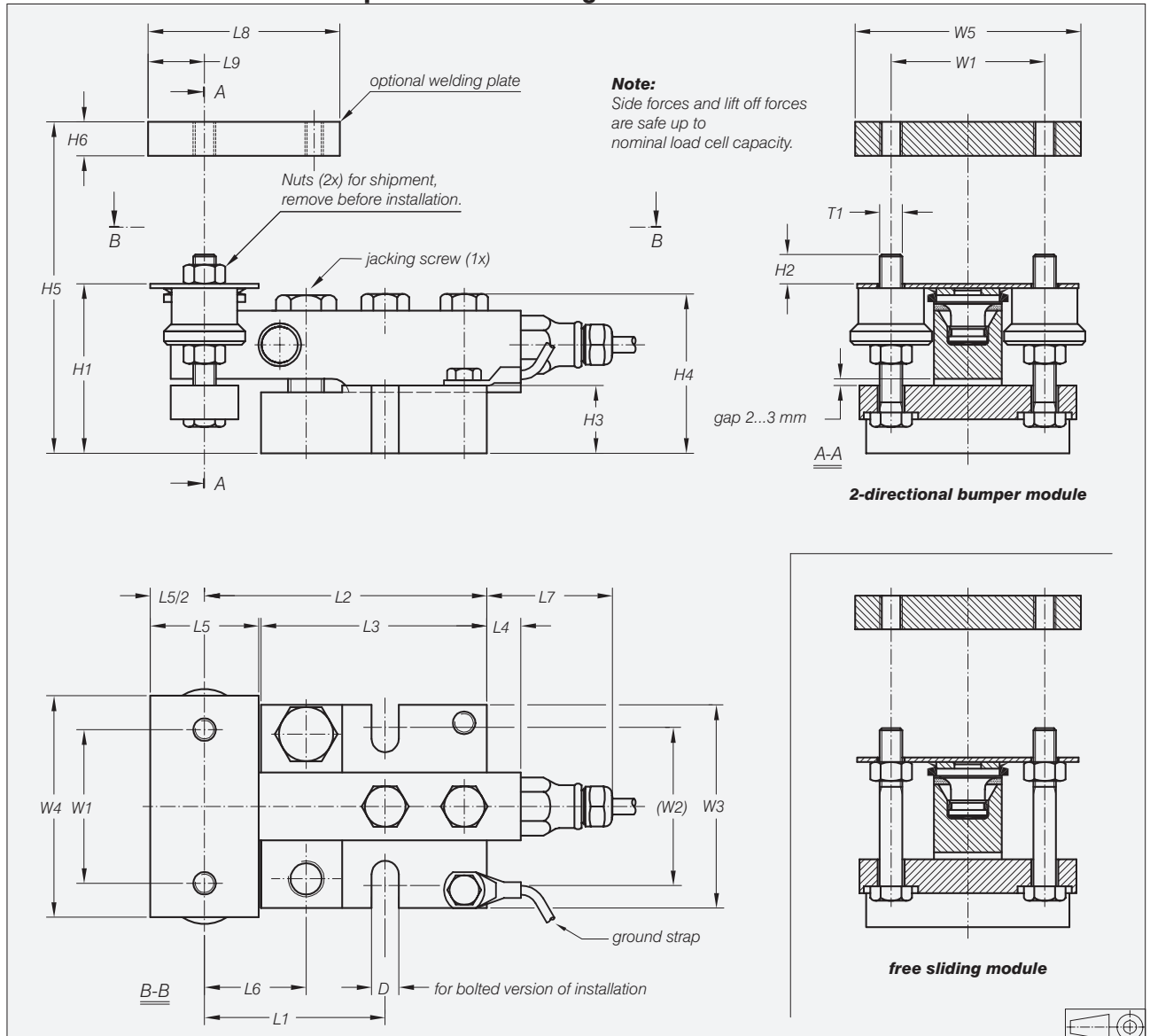
Important features

- 2 Versions available: 2-directional and 3-directional bumper module.
- Blind hole load introduction.
- Capacity range 20 kg to 10000 kg.
- Low profile.
- Very easy to install.
- No check links needed.
- Jacking bolt included.
- Lift off protection included.
- Installation by bolting or welding.
- W&M certified.

Accessory

- Upper welding plate.

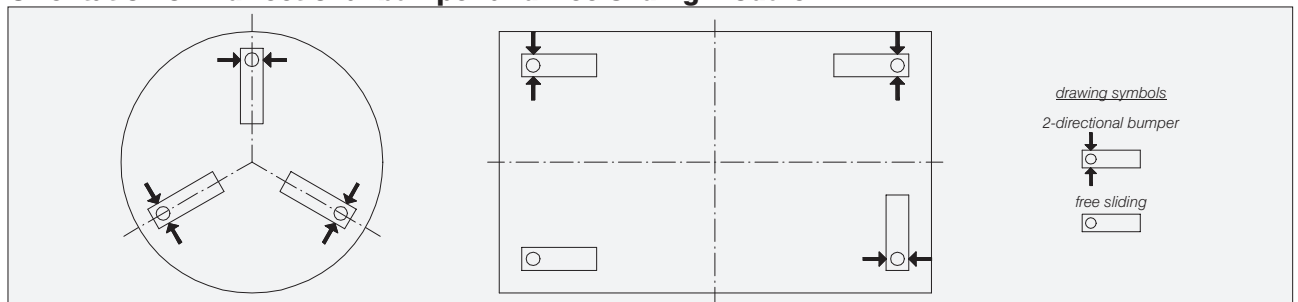
Dimensions 2-directional bumper and free sliding module



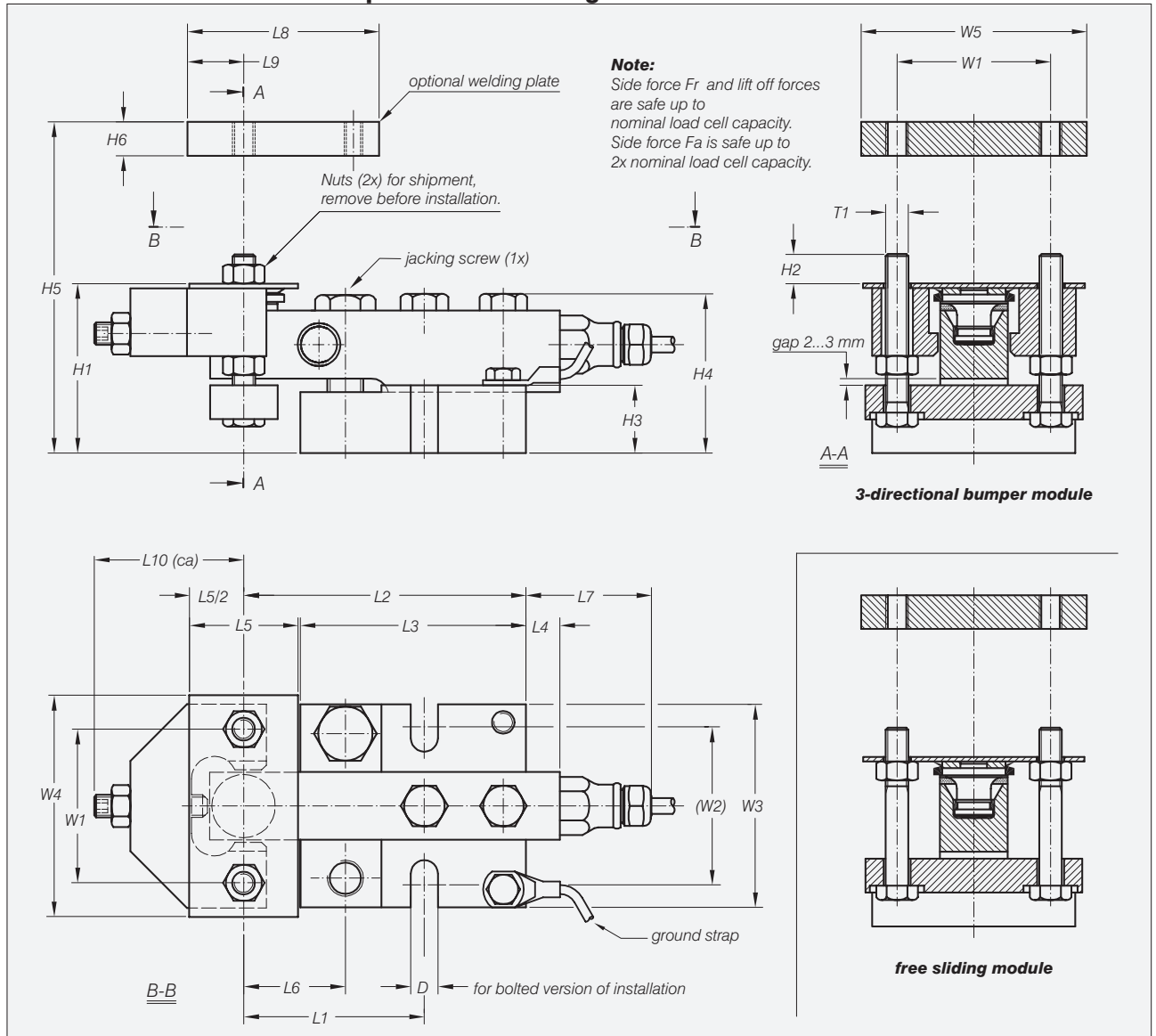
Load cell type	H1	H2	H3	H4	H5	H6	L1	L2	L3	L4	L5	L6	L7	L8	L9	W1	W2	W3	W4	W5	D	T1
SB4/SB5-5/10/20 kN	75	13	30	71	90	15	80	125	100	15	48	45	56	85	25	68	70	90	98	100	12	M10
SB4/SB5-50 kN	110	18	50	107	130	20	105	160	130	9	58	55	50	110	30	94	100	120	138	140	16	M16
SB4SB5/-100 kN	135	23	50	133	160	25	135	205	160	10	68	75	51	135	35	120	130	150	178	180	20	M20
SB6-0.2/0.5/1/2 kN	78	10	40	66	90	12	55	115	95	5	38	35	46	70	20	54	60	80	78	80	8	M6
SB14-0.5/1/2.5/5 kN	75	13	35	71	90	15	80	125	100	-	48	45	37	85	25	68	70	90	98	100	12	M10
SLB-0.2/0.5/1/2.5/5 kN	74	13	35	70	89	15	80	125	100	-	48	45	17	85	25	68	70	90	98	100	12	M10

All dimensions in mm. Dimensions and specifications are subject to change without notice. Assembly drawings with installation instructions and CAD files for customer's own applications drawings are available on request.

Orientation of 2-directional bumper and free sliding module



Dimensions 3-directional bumper and free sliding module



Load cell type	H1	H2	H3	H4	H5	H6	L1	L2	L3	L4	L5	L6	L7	L8	L9	L10	W1	W2	W3	W4	W5	D	T1
SB4/SB5-5/10/20 kN	75	13	30	71	90	15	80	125	100	15	48	45	56	85	25	67	68	70	90	98	100	12	M10
SB4/SB5-50 kN	110	18	50	107	130	20	105	160	130	9	58	55	50	110	30	103	94	100	120	138	140	16	M16
SB4SB5/-100 kN	135	23	50	133	160	25	135	205	160	10	68	75	51	135	35	132	120	130	150	178	180	20	M20
SB6-0.2/0.5/1/2 kN	78	10	40	66	90	12	55	115	95	5	38	35	46	70	20	?	54	60	80	78	80	8	M6
SB14-0.5/1/2.5/5 kN	75	13	35	71	90	15	80	125	100	-	48	45	37	85	25	65	68	70	90	98	100	12	M10
SLB-0.2/0.5/1/2.5/5 kN	74	13	35	70	89	15	80	125	100	-	48	45	17	85	25	65	68	70	90	98	100	12	M10

All dimensions in mm. Dimensions and specifications are subject to change without notice. Assembly drawings with installation instructions and CAD files for customer's own applications drawings are available on request.

Orientation of 3-directional bumper and free sliding module

