

Type 55-01-07H Rocker System

30 t and 40 t



Rocker System 55-01-07H with RC3 Load Cell



Flintec Bubble Level

Flintec load cell supports are designed to prevent unwanted forces from affecting load cell performance.

The Type 55-01-07H is a self aligning rocker system, combining excellent load introduction with low profile design.

Especially designed for the RC3/RC3D load cells.

Material: steel, zinc plated.

The unique Flintec bubble level is available for accurate vertical alignment of the load cell.

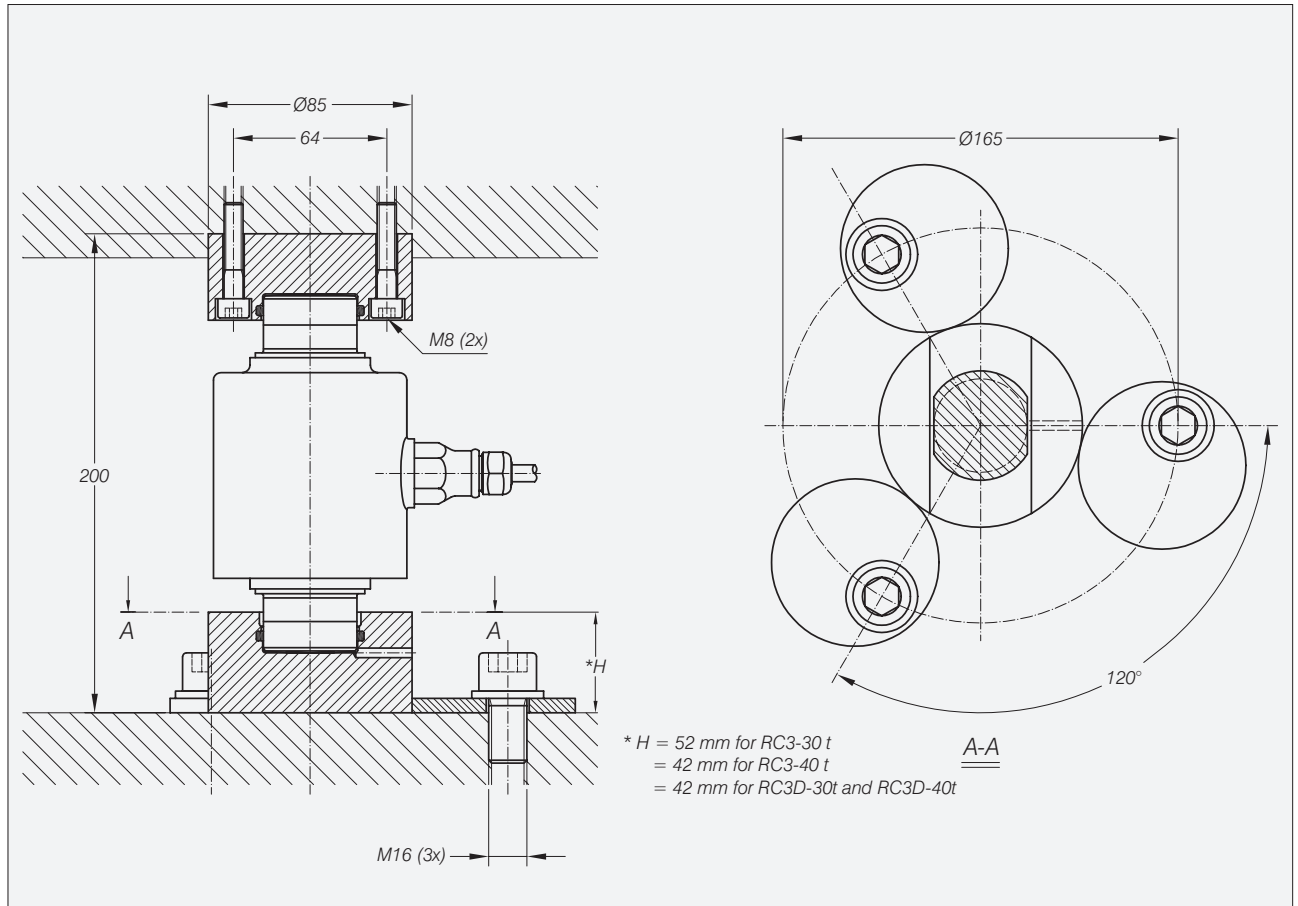
Important Features

- Capacity 30 t and 40 t.
- Low cost.
- Very easy to install.
- Especially designed for weigh bridges.
- W&M certified.

Accessories

- Bubble level.

Dimensions



All dimensions in mm. Dimensions and specifications are subject to change without notice.
 Assembly drawings with installation instructions and CAD files for customer's own applications drawings are available on request.