

Type 53-04 Tension Assembly

Flintec load cell supports are designed to prevent unwanted forces from affecting load cell performance.

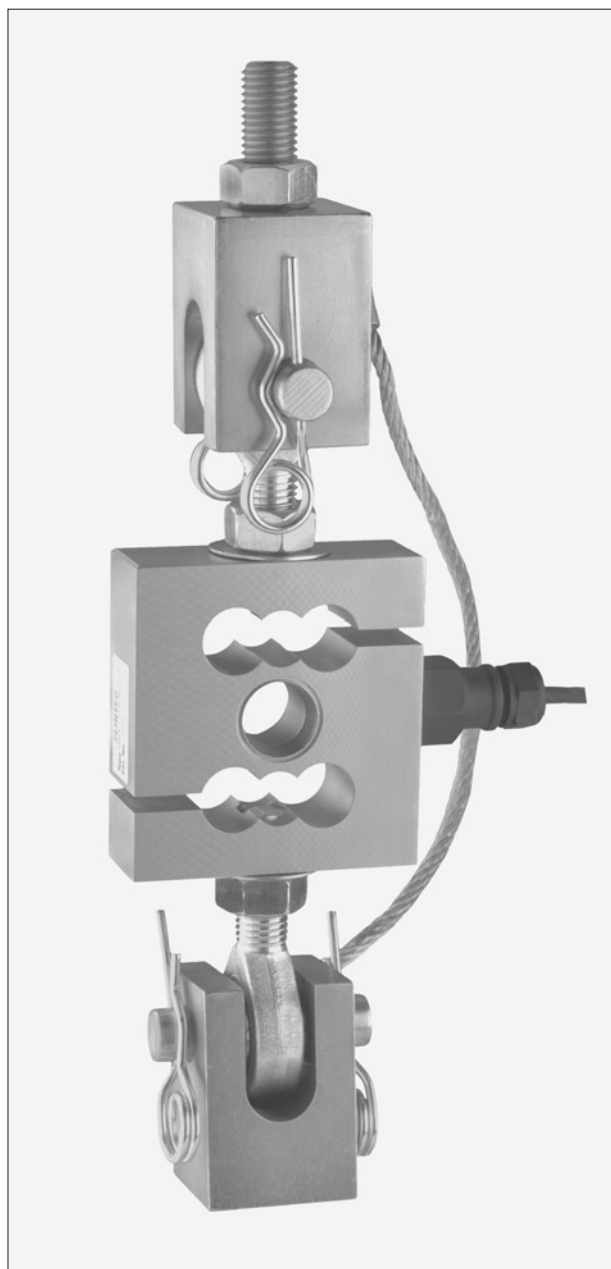
The Type 53-04 is a self aligning tension assembly.

Especially designed for the UB1, UB6 and UB5 load cells.

Standard version: steel, zinc plated.

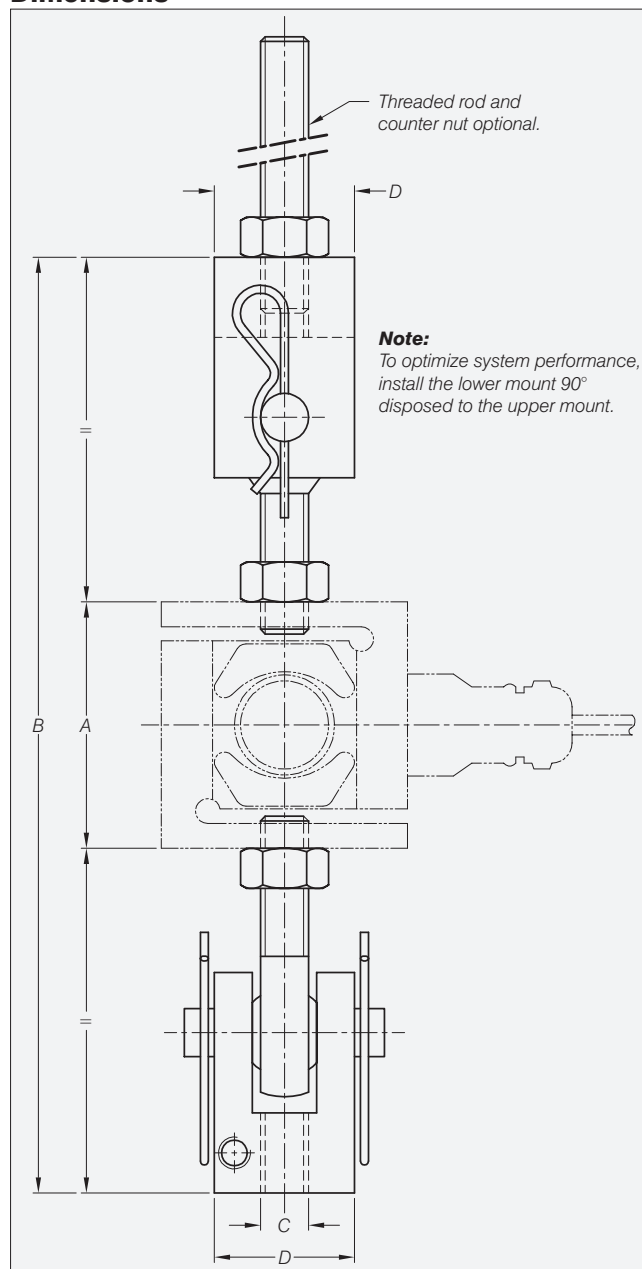
Important Features

- Capacity range: 100 kg to 5 000 kg.
- Very easy to install.
- Especially designed for hopper scales, tank weighing systems and hybrid scale conversions.
- W&M certified.



Tension assembly 53-04 and UB1 load cell

Dimensions

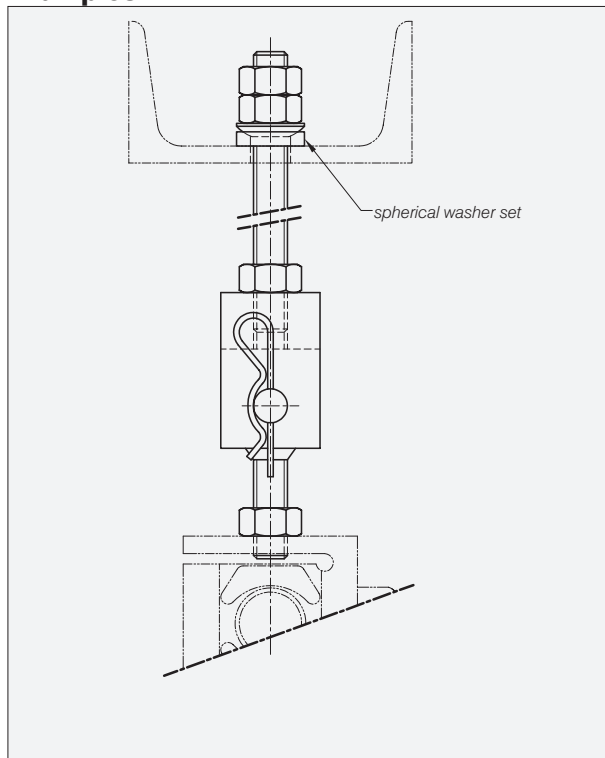


Load Cell Type	Capacity in kg	A	B	C	D
UB6/UB5-1 kN/2 kN/5 kN	102/204/510	61.5	240	M12	32
UB1/UB5-10 kN/20 kN	1020/2039	92	270	M16	40
UB1/UB5-50 kN	5099	136	420	M24	63.5

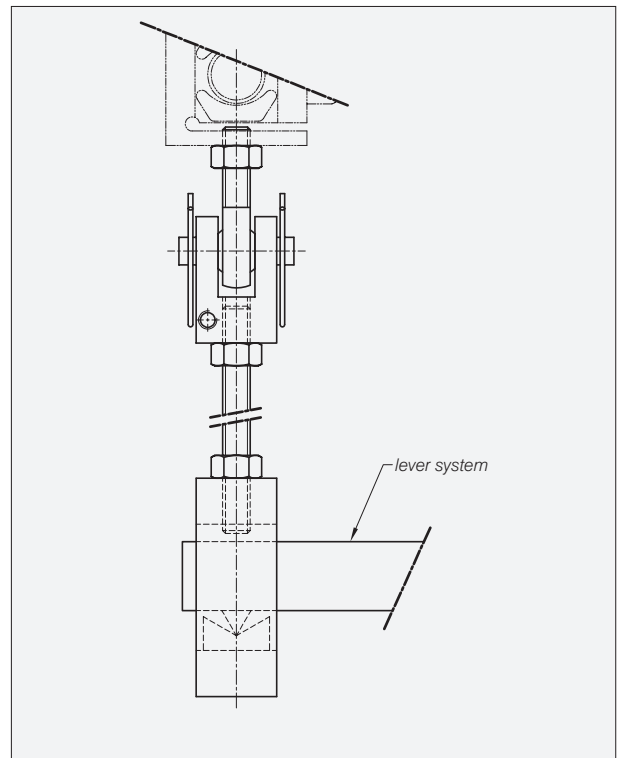
All dimensions in mm.

Dimensions and specifications are subject to change without notice.

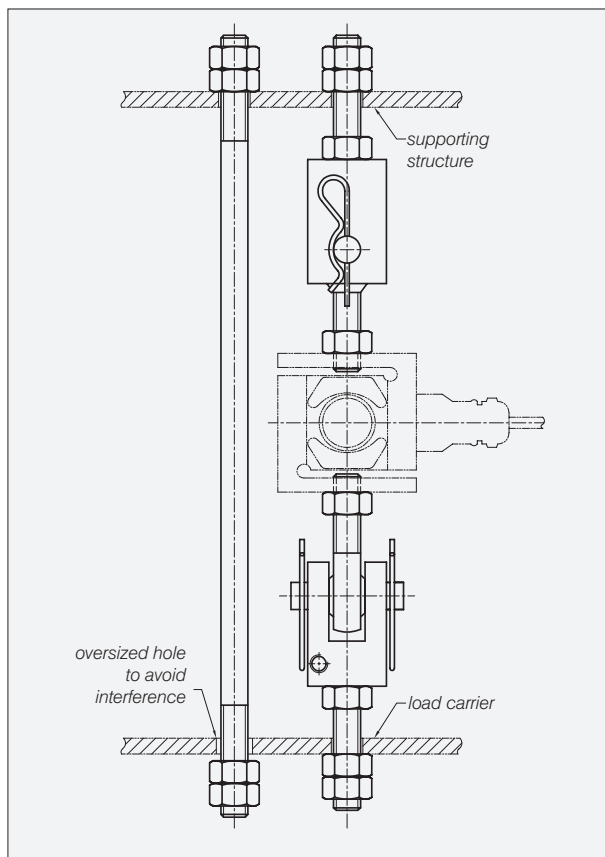
Examples



Improved connection to support structure



Hybrid scale conversion



Vertical safety check rod