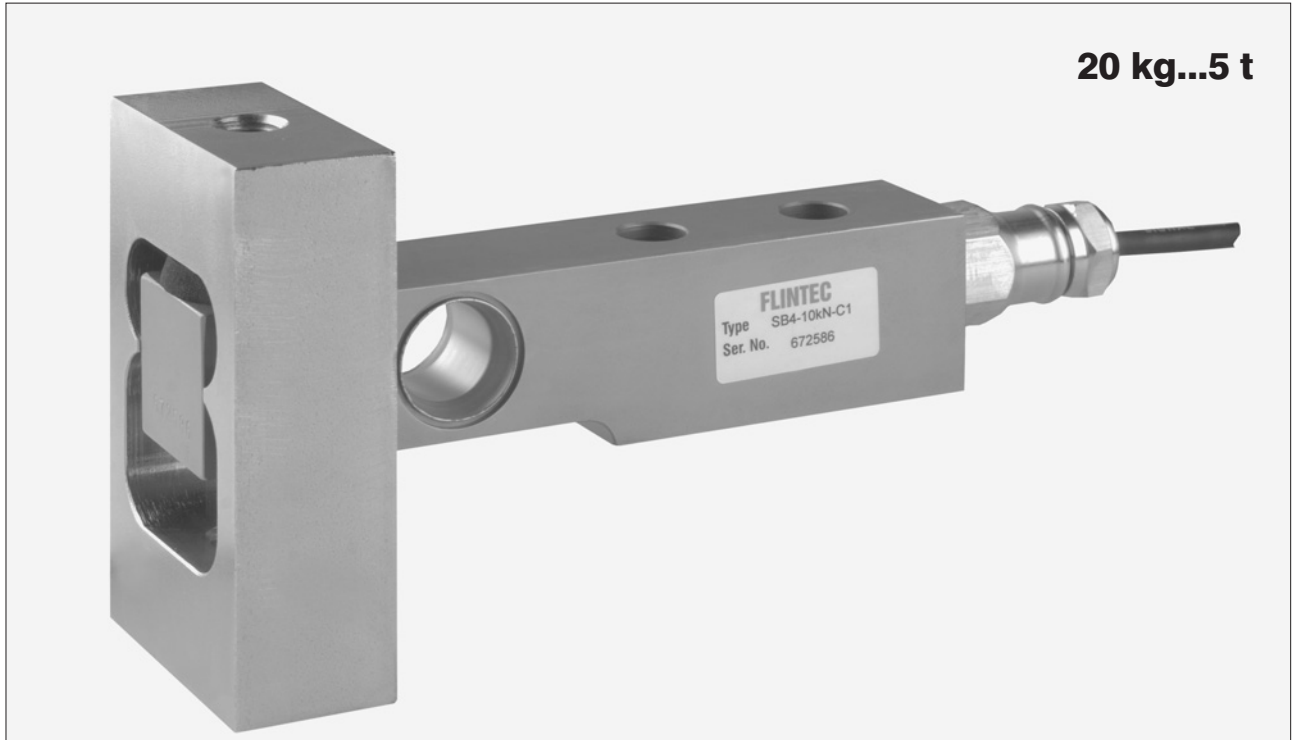


Type 52-31 Tension Adapter

20 kg...5 t



Tension adapter 52-31 and SB4 load cell

Flintec load cell supports are designed to prevent unwanted forces from affecting load cell performance.

The Type 52-31 is a self aligning tension adapter assembly.

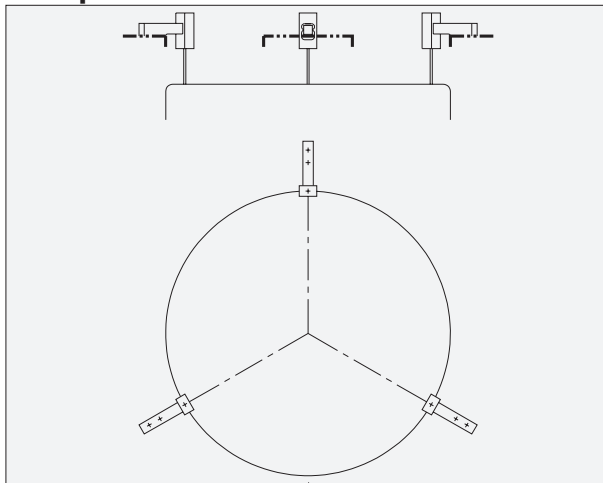
Especially designed for the SB4, SB5, SB6, SB14 and SLB load cells.

Standard version: steel, zinc plated.

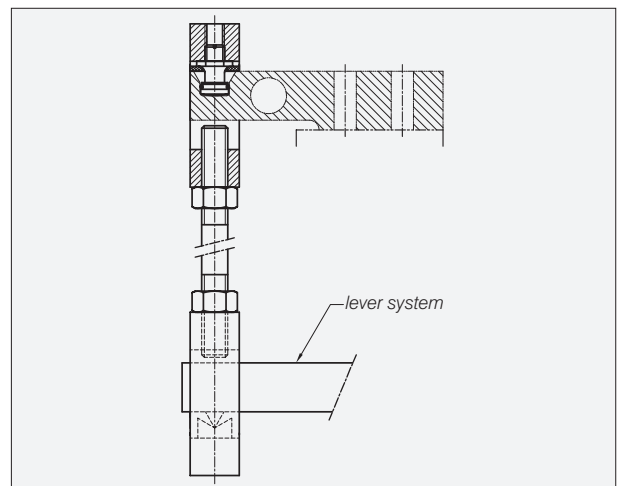
Important Features

- Blind hole load introduction.
- Capacity range: 20 kg to 5 000 kg.
- Very easy to install.
- Especially designed to support suspended loads and for hybrid scale conversions.
- W&M certified.

Examples

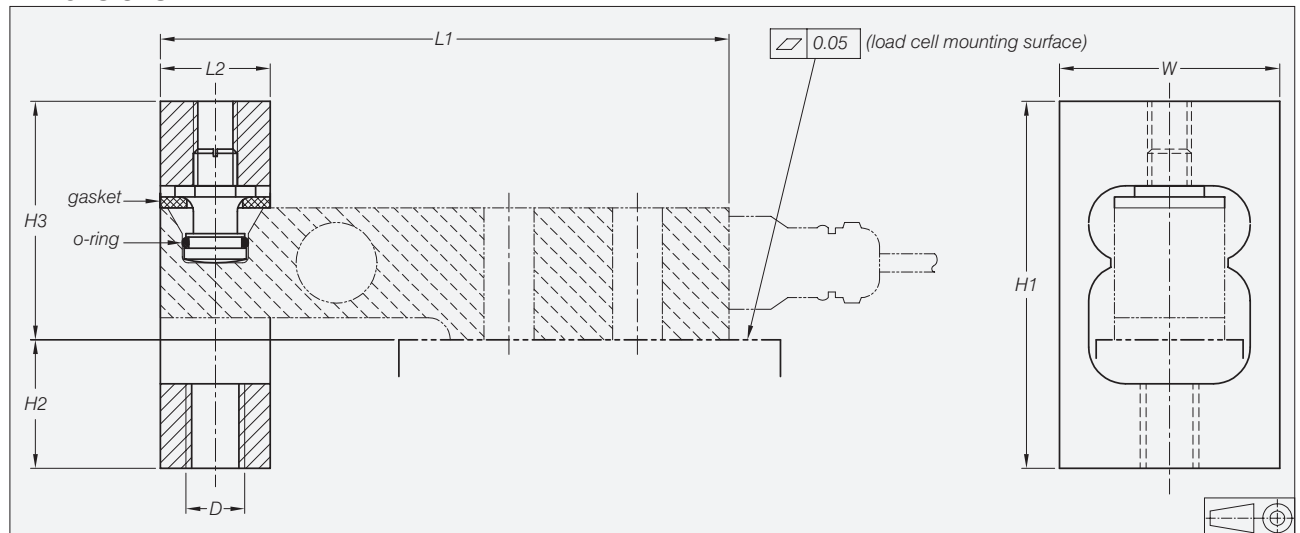


Tank weighing system with 3 load cells



Hybrid scale conversion

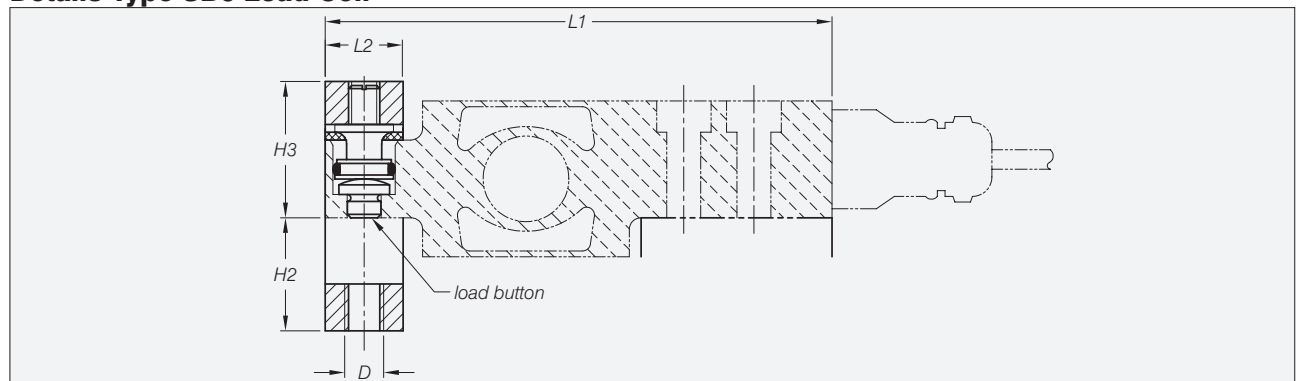
Dimensions



| Load Cell Type | Capacity in kg | L1 | L2 | H1 | H2 | H3 | W | Tension rod D |
|---------------------------------------|----------------------|-----|----|-----|----|----|----|---------------|
| SB4/SB5-5 kN/10 kN/20 kN | 510/1020/2039 | 155 | 30 | 115 | 45 | 70 | 60 | M16 |
| SB4/SB5-50 kN | 5099 | 190 | 40 | 165 | 70 | 95 | 80 | M24 |
| SB6-200 N/500 N/1 kN/2 kN | 20.4/51/102/204 | 130 | 20 | 64 | 29 | 35 | 50 | M10 |
| SB14-500 lb/1 klb/2.5 klb/5 klb | 227/454/1134/2268 | 139 | 30 | 115 | 50 | 65 | 60 | M16 |
| SLB-200 lb/500 lb/1 klb/2.5 klb/5 klb | 91/227/454/1134/2268 | 139 | 30 | 115 | 51 | 64 | 60 | M16 |

All dimensions in mm. Dimensions and specifications are subject to change without notice.
CAD files for customer's own applications drawings are available on request.

Details Type SB6 Load Cell



Details of connection to a load carrier

