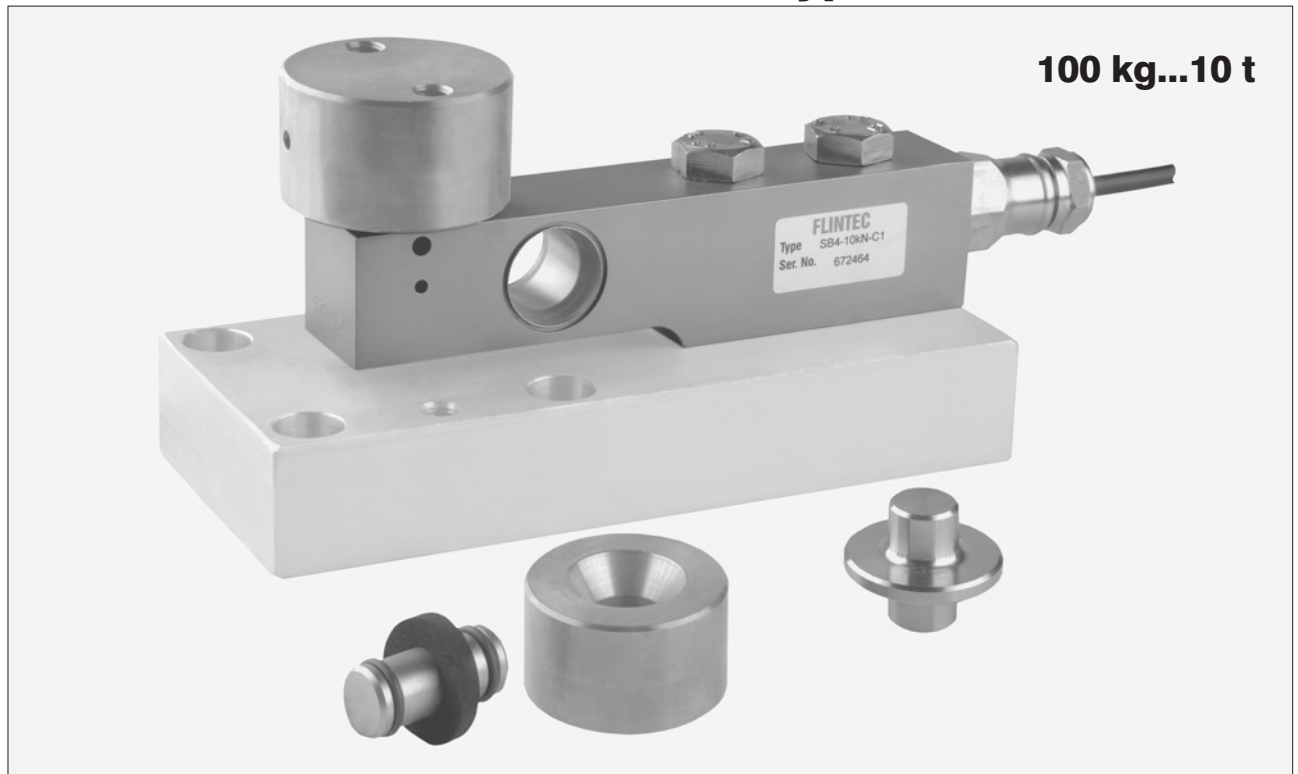


Type 52-08 Rocker Pin



Rocker pin 52-08 and SB4 load cell combined with base plate 52-00

Flintec load cell supports are designed to prevent unwanted forces from affecting load cell performance.

The Type 52-08 is a self aligning rocker pin assembly; combining excellent load introduction with low profile design.

Especially designed for the SB4, SB5, SB14 and SLB load cells.

An Installation Guide Pin is available for easy alignment.

Material: stainless steel.

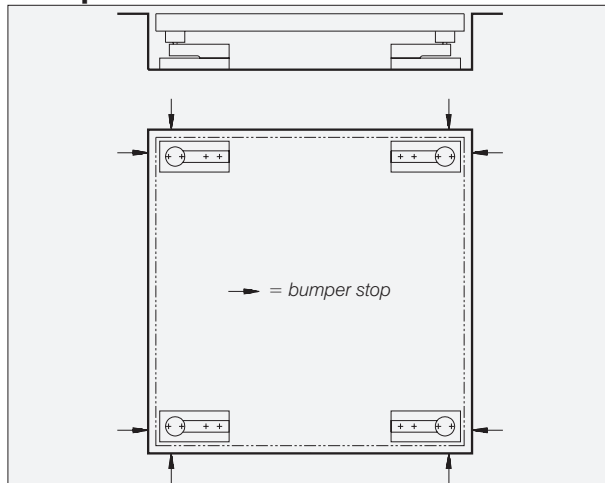
Important Features

- Blind hole load introduction.
- Capacity range: 100 kg to 10 000 kg.
- Excellent reproducibility of load application.
- Low profile.
- Very easy to install.
- W&M certified.

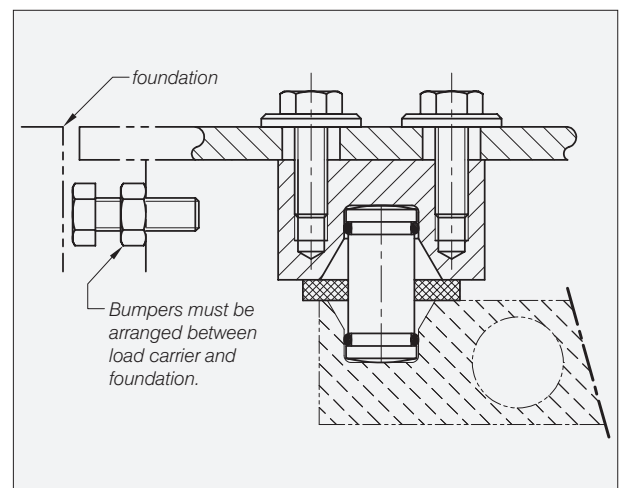
Accessory

- Installation guide pin.

Examples

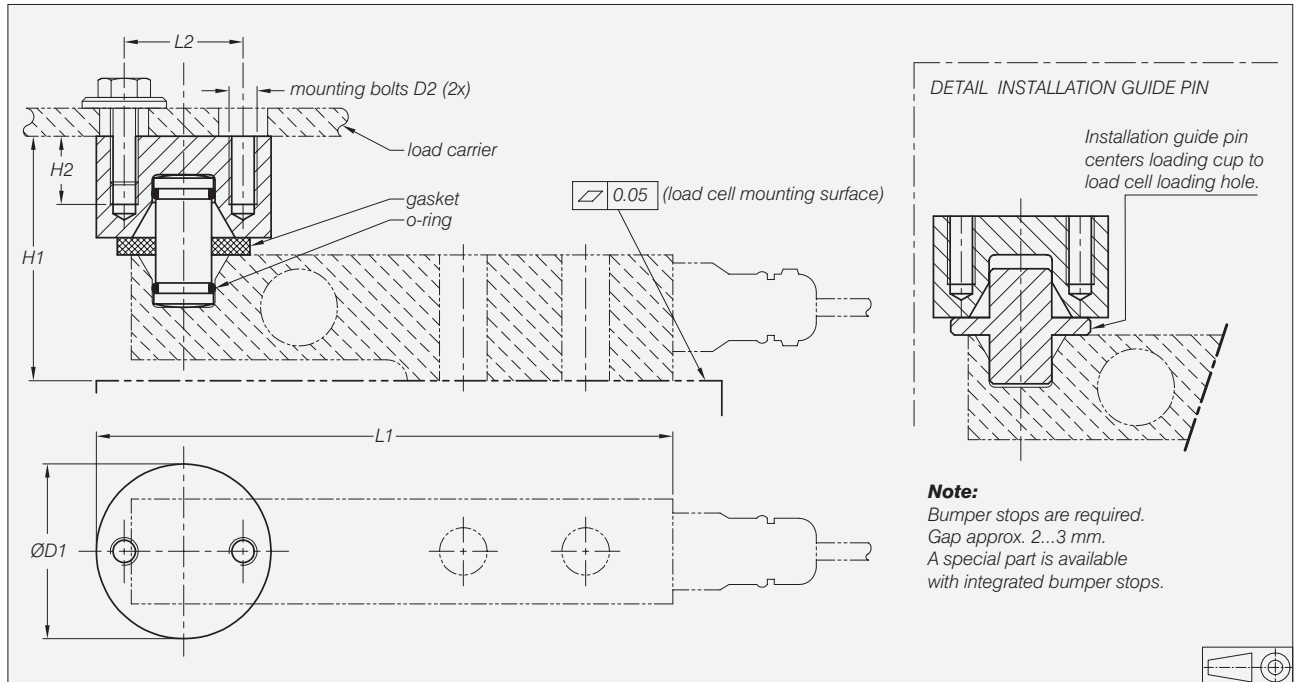


Platform or hopper scale with 4 load cells



Bumper stop detail

Dimensions



Load Cell Type	Capacity in kg	L1	L2	H1	H2	D1	Mounting bolts D2
SB4/SB5-5 kN/10 kN/20 kN	510/1020/2039	165	34	70	16	50	M8
SB4/SB5-50 kN	5099	199	44	90	20	60	M10
SB4/SB5-100 kN	10197	250	50	115	20	68	M10
SB14-500 lb/1 klb	227/454	149	34	65	16	50	M8
SB14-2.5 klb/5 klb	1134/2268	149	34	67*	16	50	M8
SLB-200 lb/500 lb/1 klb/2.5 klb/5 klb	91/227/454/1134/2268	149	34	66*	16	50	M8

* Including spacer

All dimensions in mm. Dimensions and specifications are subject to change without notice.

Details Type SLB Load Cell

