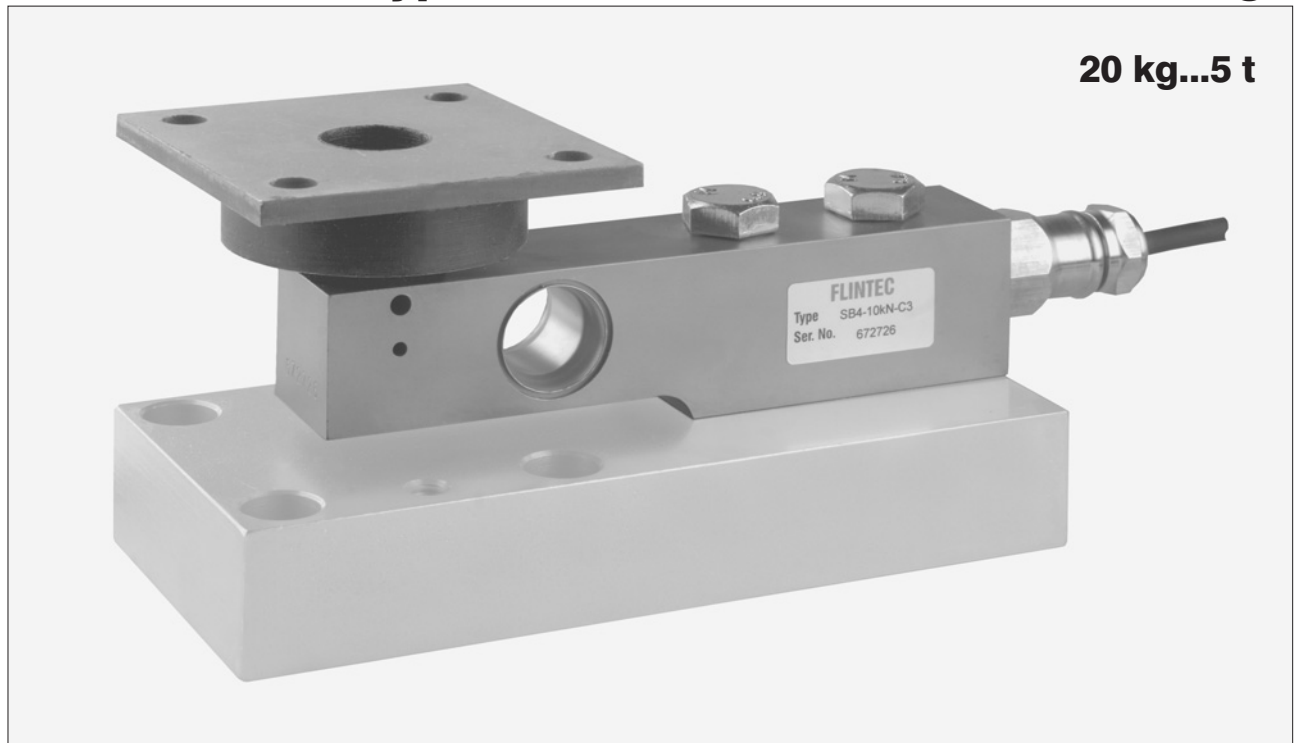


## Type 52-05 Rubber Element with Flange



Rubber element with flange 52-05 and SB4 load cell combined with base plate 52-00

Flintec load cell supports are designed to prevent unwanted forces from affecting load cell performance.

The Type 52-05 is a self aligning rubber element with flange, combining excellent load introduction with low profile design.

Especially designed for the SB4, SB5, SB6, SB14 and SLB load cells.

Material: steel, zinc plated; alternatively stainless steel.

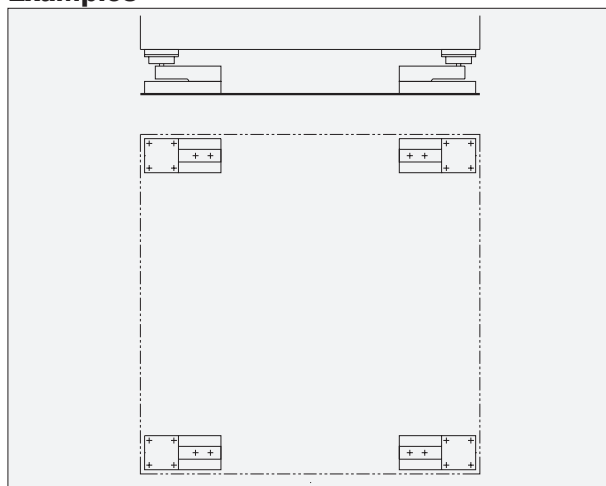
### Important Features

- Blind hole load introduction.
- Capacity range: 20 kg to 5 000 kg.
- High lateral compliance.
- Very easy to install.
- Especially designed for hopper, mixer and platform scales.
- W&M certified.

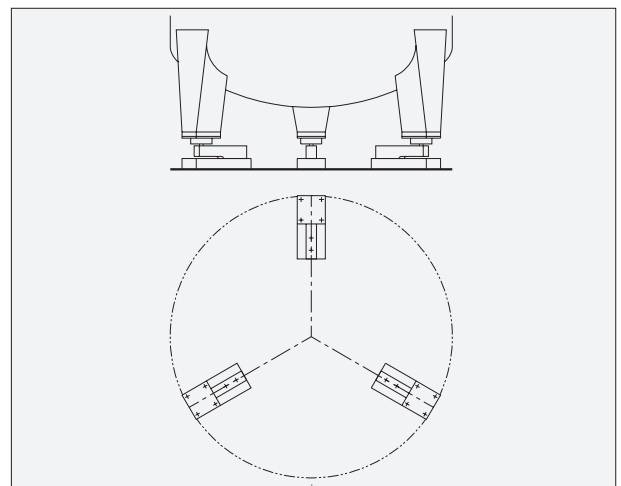
### Accessory

- Welding plate.

### Examples

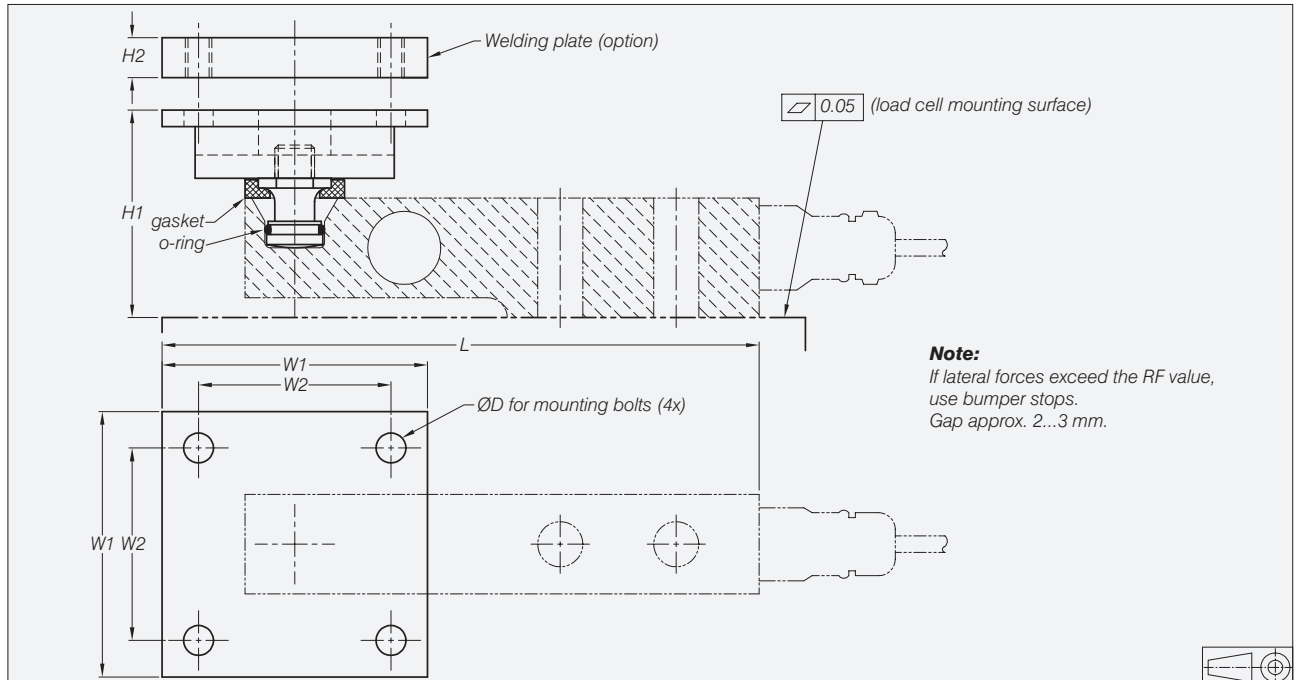


Platform or hopper scale with 4 load cells



Tank weighing system with 3 load cells

## Dimensions



**Note:**  
If lateral forces exceed the RF value,  
use bumper stops.  
Gap approx. 2...3 mm.

Load Cell Type	Capacity in kg	L	H1	H2	W1	W2	Mounting bolts D	S <sub>max</sub> **	RF***
SB4/SB5-5 kN/10 kN/20 kN	510/1020/2039	180	63	12	80	58	M8	5 mm	1600 N
SB4/SB5-50 kN	5099	219	78	12	100	76	M10	5 mm	5000 N
SB6-200 N/500 N/1 kN/2 kN	20.4/51/102/204	150	65*	6	60	44	M6	6 mm	700 N
SB14-500 lb	227	154	54	6	60	44	M6	6 mm	700 N
SB14-1 klb/2.5 klb/5 klb	454/1134/2268	164	60*	12	80	58	M8	5 mm	1600 N
SLB-200 lb/500 lb	91/227	154	55*	6	60	44	M6	6 mm	700 N
SLB-1 klb/2.5 klb/5 klb	454/1134/2268	164	59*	12	80	58	M8	5 mm	1600 N

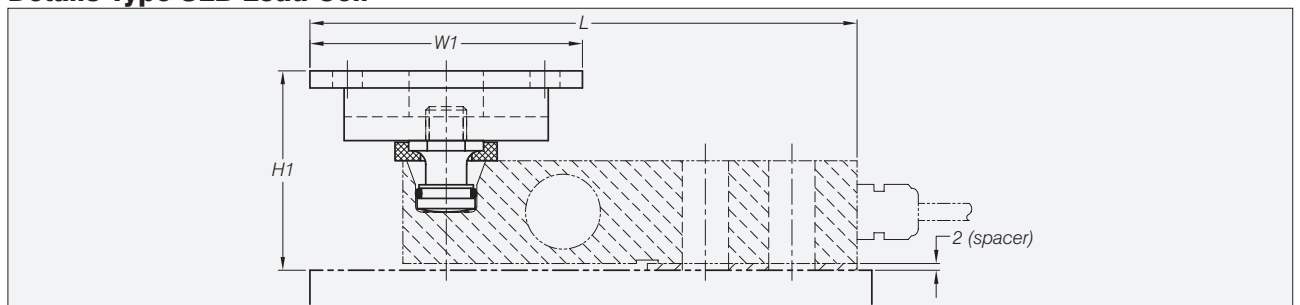
\* Including spacer.

\*\* S<sub>max</sub> = maximum lateral displacement of load introduction.

\*\*\* RF = restoring force at S<sub>max</sub>.

All dimensions in mm. Dimensions and specifications are subject to change without notice.  
CAD files for customer's own applications drawings are available on request.

## Details Type SLB Load Cell



## Details Type SB6 Load Cell

