

Model 220

Silo Mount



Features

- Capacities: 5, 10, 20 & 30 tons (5,000, 10,000, 20,000 & 30,000 kg)
- Stainless steel IP68 load cell
- Low profile
- Tolerant of angular misalignment
- Stainless steel mounting option
- Lift-off protection
- Jacking facility
- EEx ia IIC T6 option

The 220 Silo Mount is specifically designed for the support of tanks, silos and hoppers, making it ideal for indoor or outdoor process control applications when high accuracy weighing is demanded.

The silo mount is designed to support a uniformly distributed load and is capable of tilting through a maximum of $\pm 3^\circ$ from vertical.

The silo mount forms a compact assembly offering simple installation which is rugged and tolerant of heavy industrial environments. Heavy gauge steel construction provides a rigid, robust load cell mount for high accuracy and prolonged life. An earth strap with fixing bolts is provided.

The silo mount incorporates lift-off protection and allows for thermal expansion of the weighing vessel.



EXCELLENCE IN LOAD CELLS

Contact Info

E-mail
sales@[tedea-huntleigh.com](mailto:sales@tedea-huntleigh.com)
Website
www.tedea-huntleigh.com

Europe
Tedeo-Huntleigh
Europe Ltd.
37 Portmanmoor
Road
Cardiff
CF24 SHE

International
Tedeo-Huntleigh Inter-
national Ltd.
5 Hozoran St.
New Industrial Zone
P.O. Box 8381, Netanya
42506

China
Beijing Tedeo-Huntleigh
No. 16 Hong Da Bei Lu
Da Xing County, Beijing
Economic & Technology
Development Area,
Beijing 100176
Tel: +86-10-67881604-

Germany
Tedeo-Huntleigh
GmbH.
Mumlingweg 18
D-64297
Darmstadt-
Eberstadt

France
SEEA sa
16 Rue Francis
Vovelle
28000 Chartres
France

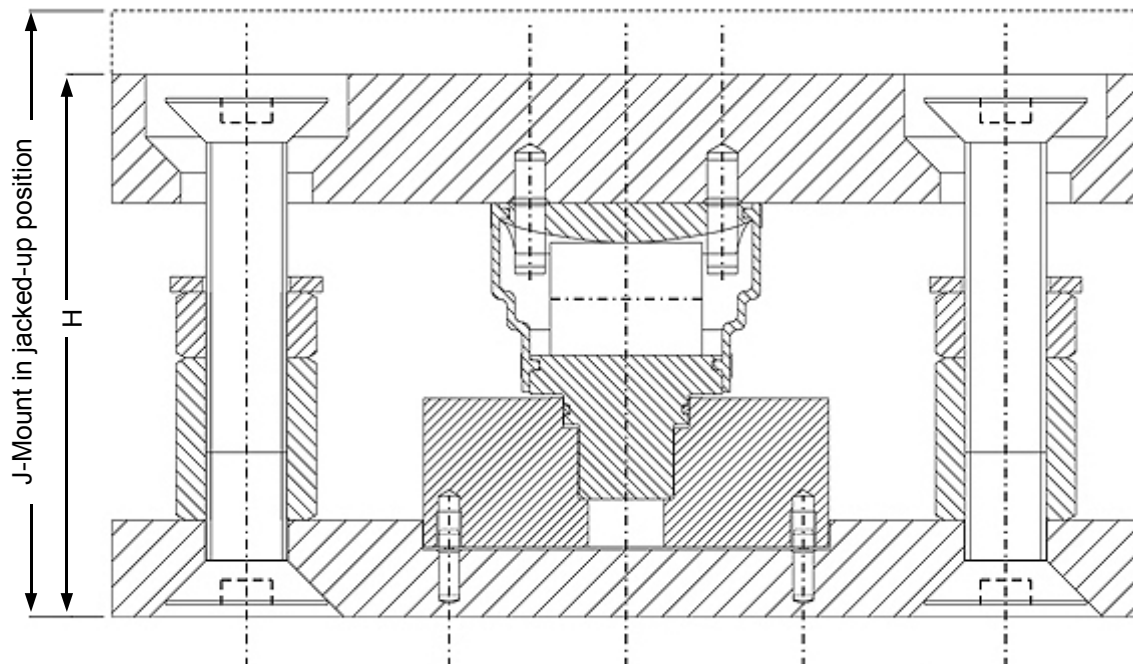
7800 DEERING AVE.
P.O. BOX 7964
CANOGA PARK CA 91309-7964
USA

TEL: 800.626.2616
FAX: 818.340.1175

Model 220

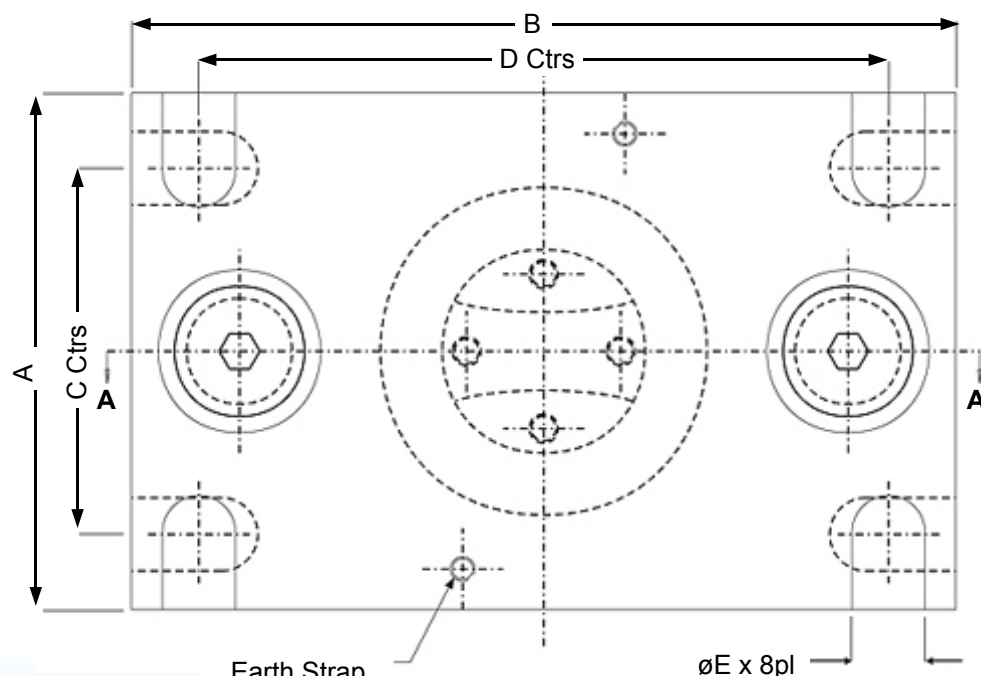
Silo Mount

This mount is designed for a uniformly distributed load on the top and bottom surfaces.



CAPACITY	A	B	C	D	ØE	H	J
5 & 10t	127	203	90	170	18	107	118
20 & 30t	152	245	115	208	24	148	156

Mounting Hole Positions. All dimensions in mm



Other Information

The ultimate design of the Model 220 Silo Mount enables the mount to be installed in the 'jacked up' position without the load cell. This can considerably aid installation and prevents the possibility of damage to the load cell during commissioning.

The roller assembly can be orientated to accommodate thermal expansion in either direction.

Earth Strap
Attachment Bolts
(2 Supplied)

Product Weight (per capacity)	
5 ton	4.09 kg
10 ton	4.09 kg
20-30 ton	2.5 kg