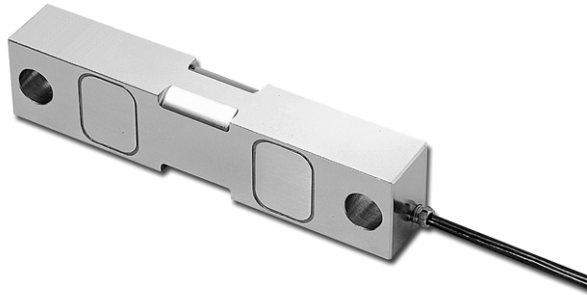


Double Ended Shear Beam



FEATURES

- Capacities 1K-75K lb
- Double-ended center-load shear beam design
- Rationalized outputs
- Free of horizontal movement
- Insensitive to side load
- Electroless nickel plated alloy tool steel

OPTIONAL FEATURES

- Hermetically sealed available
- Stainless steel available

DESCRIPTION

The double-ended mounting provides good restraint to possible movement of the tanks and, in many cases, eliminates the need for check rods. The Shear Beam design gives excellent performance for high capacity loading.

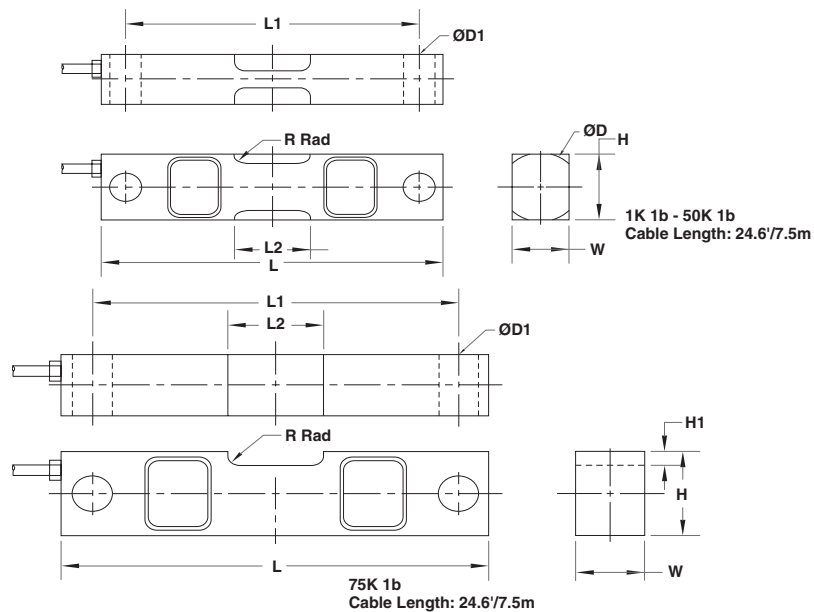
The output is rationalized to facilitate multi-cell application.

DSR is constructed of alloy tool steel and is potted to IP67 providing excellent protection against moisture and humidity.

APPLICATIONS

- Silo / hopper / tank weighing

OUTLINE DIMENSIONS



CAPACITY		L	L1	L2	W	H	H1	D	D1	R
1K/ 1.5K/ 2K/ 2.5K/ 3K/ 5K lb	mm	190.5	158.8	35.4	31.7	31.7	-	31.7	12.7	5.0
	(inch)	7.50	6.25	1.39	1.25	1.25	-	1.25	0.50	0.20
10K/ 15K/ 20K/ 25K lb	mm	222.3	190.5	50.0	36.6	49.3	-	50.8	20.6	5.0
	(inch)	8.75	7.50	1.97	1.44	1.94	-	2.00	0.81	0.20
50K/ 75K lb	mm	342.9	292.1	82.6	62.0	74.7	4.6	76.2	33.3	5.0
	(inch)	13.50	11.50	3.25	2.44	2.94	0.18	3.00	1.31	0.20



SPECIFICATIONS

Capacity	1K, 1.5K, 2K, 2.5K, 3K, 5K, 10K, 15K, 20K, 25K, 50K, 75K lb
Recommended Excitation	10 V AC/DC
Maximum Excitation	15 V AC/DC
Output at Rated Load	3 mV/V \pm 0.25%
Non linearity	0.03% (SS: 0.07%)
Hysteresis Error	0.03% (SS: 0.07%)
Non Repeatability	0.02%
Creep (20 minutes)	0.03%
Zero Return (20 minutes)	0.03%
Temp. Effect/10°C on Span	0.015%
Temp. Effect/10°C on Zero	0.026%
Compensated Temp. Range	-10°C to 40°C
Operating Temp. Range	-20°C to 60°C
Zero Balance	\pm 1%
Input Resistance	770 \pm 10 Ω
Output Resistance	700 \pm 5 Ω
Insulation Resistance (50VDC)	>5000M Ω
Deflection at Rated Load	<1mm
Safe Overload	150%
Ultimate Overload	300%
* SS: Stainless Steel	

All specifications listed subject to change without notice.

VISHAY TRANSDUCERS (VT) SALES OFFICES

VT Americas
Covina, CA

PH: +1-626-858-8899
FAX: +1-626-332-3418
vt.us@vishaymg.com

VMG France
Chartres

PH: +33-2-37-33-31-20
FAX: +33-2-37-33-31-29
vt.fr@vishaymg.com

VT Canada
Toronto

PH: +1-416-251-2554
FAX: +1-416-251-2690
vt.can@vishaymg.com

VMG Iberica
Madrid

PH: +34-91-7218890
FAX: +34-91-7219056
vt.es@vishaymg.com

VMG UK
Basingstoke

PH: +44-125-646-2131
FAX: +44-125-647-1441
vt.uk@vishaymg.com

VMG Israel
Netanya

PH: +972-9-863-8888
FAX: +972-9-863-8800
vt.il@vishaymg.com

VT Sweden
Karlskoga

PH: +46-586-630-00
FAX: +46-586-630-99
vt.se@vishaymg.com

VT China
Tianjin

PH: +86-22-2835-3503
FAX: +86-22-2835-7261
vt.prc@vishaymg.com

VMG Germany
Heilbronn

PH: +49-7131-3901-260
FAX: +49-7131-3901-2666
vt.de@vishaymg.com

VT Taiwan*
Taipei

PH: +886-2-2696-0168
FAX: +886-2-2696-4965
vt.roc@vishaymg.com
*Asia except China