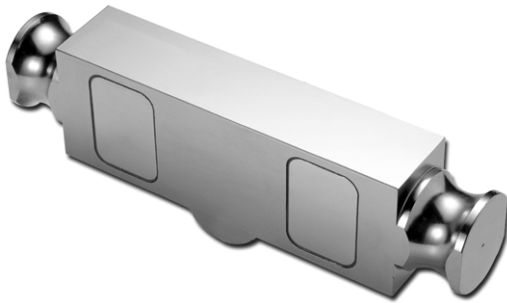


Double-Ended Link Shear Beam



FEATURES

- Capacities 25K-125K lb
- Center-mounted with double-linked shear beam design
- Free of horizontal movement
- Insensitive to side load
- Electroless nickel plated alloy tool steel
- NTEP Class III L 10,000 for whole series
- Surge protection optional for 60K lb

DESCRIPTION

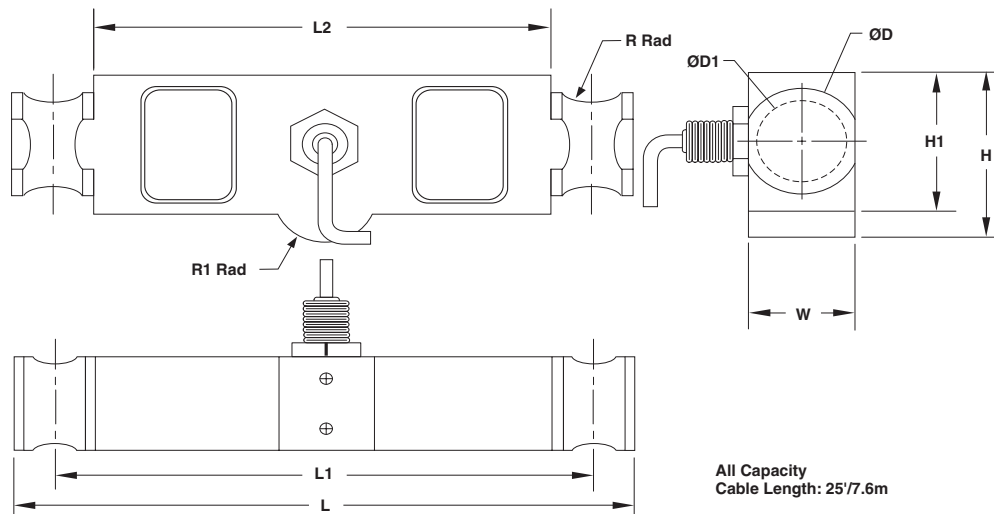
DLB is designed to be center-mounted with double-linked loading. This design provides free movement in all horizontal directions virtually eliminating binding or friction points. The Shear Beam design gives excellent performance for high capacity loading.

DLB is constructed of alloy steel and fully potted sealed with special chemical compounds to IP67 providing excellent protection against moisture and humidity.

APPLICATIONS

- Truck / rail scales
- Silo / hopper / tank weighing
- Fork-lift scales

OUTLINE DIMENSIONS



CAPACITY		L	L1	L2	W	H	H1	D	D1	R	R1
25K/ 40K lb	mm	209.6	184.2	158.8	49.3	75.5	62.0	50.8	41.4	12.7	12.7
	(inch)	8.25	7.25	6.25	1.94	2.97	2.44	2.00	1.63	0.50	0.50
50K/ 60K/ 75K lb	mm	292.1	254.0	215.9	49.3	88.2	74.7	55.9	43.2	19.1	25.4
	(inch)	11.50	10.00	8.50	1.94	3.47	2.94	2.20	1.70	0.75	1.00
100K/ 125K lb	mm	368.3	317.5	266.7	73.7	118.9	98.0	81.3	62.0	25.4	38.1
	(inch)	14.50	12.50	10.5	2.90	4.68	3.86	3.20	2.44	1.00	1.50



SPECIFICATIONS

Capacity	Standard	NTEP Class III L10000
	25K, 40K, 50K, 60K, 75K, 100K, 125K lb	20K, 40K, 50K, 60K, 75K, 100K, 125K lb
Recommended Excitation	10 V AC/DC	
Maximum Excitation	15 V AC/DC	
Output at Rated Load	3 mV/V \pm 0.25%	
Non linearity	0.025%	
Hysteresis Error	0.025%	
Non Repeatability	0.02%	
Creep (20 minutes)	0.03%	
Zero Return (20 minutes)	0.03%	
Temp. Effect/10°C on Span	0.015%	0.010%
Temp. Effect/10°C on Zero	0.026%	0.010%
Compensated Temp. Range	-10°C to 40°C	
Operating Temp. Range	-20°C to 60°C	
Zero Balance	\pm 1%	
Input Resistance	770 \pm 10 Ω	
Output Resistance	700 \pm 5 Ω	
Insulation Resistance (50VDC)	>5000M Ω	
Deflection at Rated Load	<0.5mm	
Safe Overload	150%	
Ultimate Overload	300%	
Minimum Dead Load (%)		5
Vmin (% %)		0.667

All specifications listed subject to change without notice.

VISHAY TRANSDUCERS (VT) SALES OFFICES

VT Americas
Covina, CA

PH: +1-626-858-8899
FAX: +1-626-332-3418
vt.us@vishaymg.com

VMG France
Chartres

PH: +33-2-37-33-31-20
FAX: +33-2-37-33-31-29
vt.fr@vishaymg.com

VT Canada
Toronto

PH: +1-416-251-2554
FAX: +1-416-251-2690
vt.can@vishaymg.com

VMG Iberica
Madrid

PH: +34-91-7218890
FAX: +34-91-7219056
vt.es@vishaymg.com

VMG UK
Basingstoke

PH: +44-125-646-2131
FAX: +44-125-647-1441
vt.uk@vishaymg.com

VMG Israel
Netanya

PH: +972-9-863-8888
FAX: +972-9-863-8800
vt.il@vishaymg.com

VT Sweden
Karlskoga

PH: +46-586-630-00
FAX: +46-586-630-99
vt.se@vishaymg.com

VT China
Tianjin

PH: +86-22-2835-3503
FAX: +86-22-2835-7261
vt.prc@vishaymg.com

VMG Germany
Heilbronn

PH: +49-7131-3901-260
FAX: +49-7131-3901-2666
vt.de@vishaymg.com

VT Taiwan*
Taipei

PH: +886-2-2696-0168
FAX: +886-2-2696-4965
vt.roc@vishaymg.com
*Asia except China