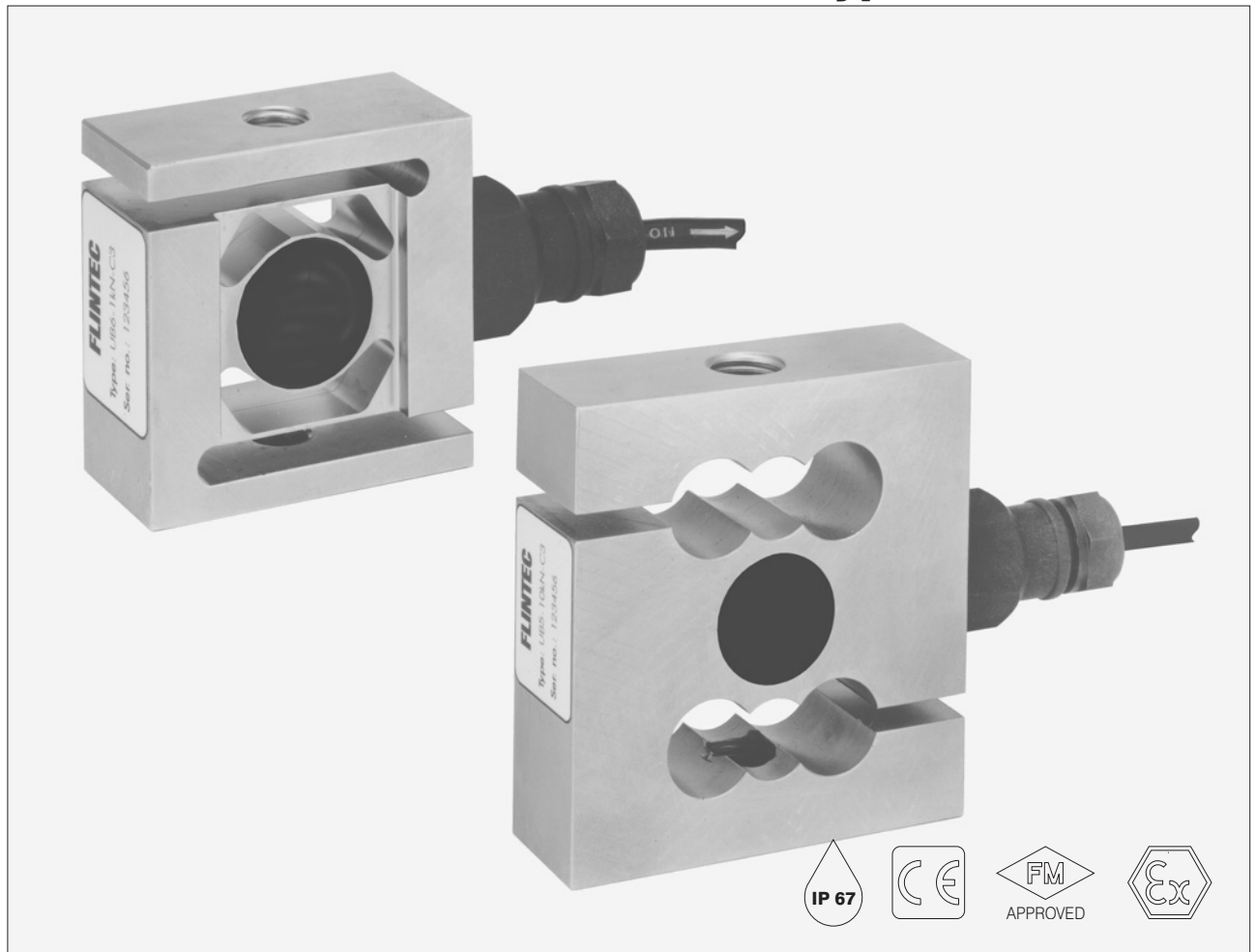


Type UB5 Load Cell



Flintec load cells are designed to meet stringent accuracy requirements.

UB5 universal load cells are available in the capacities 1 kN to 50 kN (102 kg to 5099 kg) and are available in GP accuracy.

They offer stainless steel construction and improved potting, making them suitable for use in tough industrial environments..

The Flintec calibration technique (in mV/V/Ω) eliminates time consuming corner calibration in multiple load cell systems.

The UB5 is available for use in hazardous areas zone 1, 2 (gas) and 21, 22 (dust) according to EEx ia IIC T6...T4 T150°C ATEX.

Important Features

- Capacities: 1 kN to 50 kN.
- High accuracy.
- Total stainless steel construction.
- Protection IP 67.
- High input resistance: 1100 Ω.
- Calibration in mV/V/Ω.
- Easy cable replacement.
- Complete range of loading hardware available.
- Factory mutual approved.

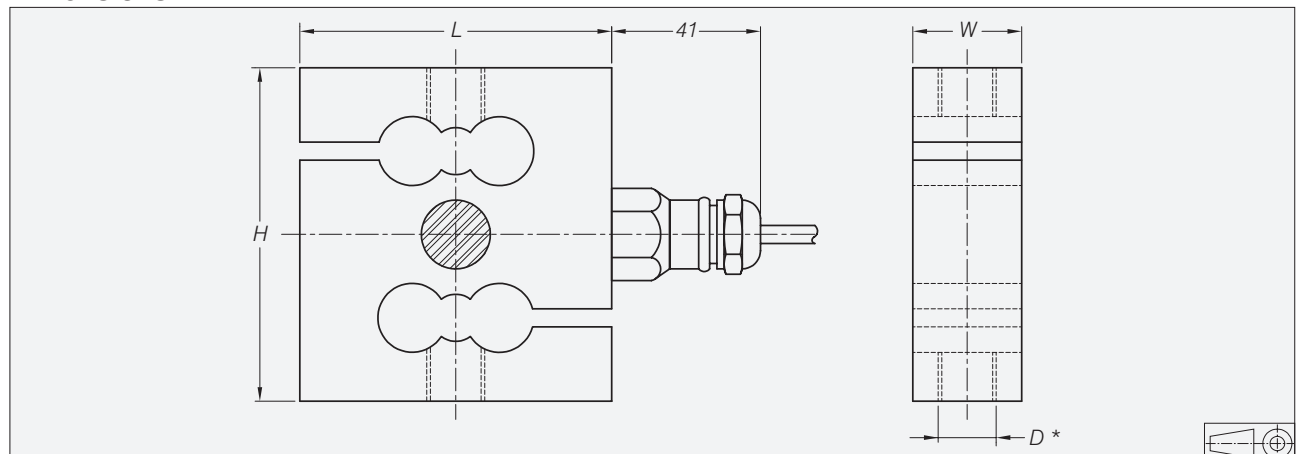
Option

- Explosion protection zone 1, 2, 21 and 22 ATEX.

UB5 Specifications

Maximum capacity (=E _{max})	kN	1 / 2 / 5 / 10 / 20 / 50
Metric equivalents (1 N=0.10197 kg)	kg	102 / 204 / 510 / 1020 / 2039 / 5099
Rated Output (=RO)	mV/V	2 ± 0.1%
Calibration in mV/V/Ω (A...I classified)	%RO	≤ ± 0.05 (≤ ± 0.005)
Accuracy class		(GP)
Combined error	%RO	≤ ± 0.040
Creep error (30 minutes) / DR	%RO	≤ ± 0.060
Temperature effect on minimum dead load output	%RO/°C	≤ ± 0.0040
Temperature effect on sensitivity	%/°C	≤ ± 0.0020
Excitation voltage	V	5...15
Zero balance	%RO	≤ ± 1.0
Input resistance	Ω	1106 ± 5
Output resistance	Ω	1000 ± 1
Insulation resistance (100 V DC)	MΩ	≥ 5000
Compensated temperature range	°C	-10...+40
Operating temperature range	°C	-20...+65
Safe load limit	%E _{max}	200
Ultimate load	%E _{max}	300
Load cell material		stainless steel 17-4 PH (1.4548)
Sealing		potted
Protection according DIN 40.050		IP 67

Dimensions



Type	L	H	W	Thread D
UB5-1 kN/2 kN/5 kN	61.5	61.5	30	M12
UB5-10 kN/20 kN	86	92	30	M16
UB5-50 kN	143	136	43	M24x2

All dimensions in mm. Dimensions and specifications are subject to change without notice.

* Unified thread 1/2-20 UNF (1...5 kN); 5/8-18 UNF (10...20 kN) and 1-12 UNF (50 kN) is available.

Wiring

- The load cell is provided with a shielded, 4 conductor cable (AWG 24).
- Cable length: 6 m.
- Cable diameter: 5 mm.
- The shield is floating.

