

# Model 600 Series

## S-Type Load Cells



### Features

- ◆ Capacities: 50 - 1000 kg (110.23 - 220.46 lbs)
- ◆ Stainless steel (616) or aluminum (601)
- ◆ Tension or compression applications
- ◆ Suitable for hanging scales
- ◆ Ideal for conversion of mechanical to electronic scales
- ◆ Meets Handbook 44, OIML R60 and other international standards

Model 601 and 616 tension compression load cells are available in aluminum alloy (601) or stainless steel (616).

Model 616 features stainless steel construction, IP67 environmental protection, 6 wire (sense) circuit, and a unique humidity-resistant protective coating. It is ideal for harsh environmental, high accuracy applications.

Ideally suited for lever conversions, hopper/tanks and vibratory feeders general process weighing and force measurement applications.

Model 616 features aluminum alloy construction, IP 65 environmental protection and 4 wire circuit. It is ideal for lower cost, high accuracy applications.

Tedea-Huntleigh, with models ranging from 2 to 50,000 is the world's largest manufacturer of precision load cells.



#### Contact Info

E-mail  
[sales@tedea-huntleigh.com](mailto:sales@tedea-huntleigh.com)  
Website  
[www.tedea-huntleigh.com](http://www.tedea-huntleigh.com)

7800 DEERING AVE.  
P.O. BOX 7964  
CANOGA PARK CA 91309-7964  
USA

TEL: 800.626.2616  
FAX: 818.340.1175

**Europe**  
Tedea-Huntleigh Europe Ltd.  
37 Portmanmoor Road  
Cardiff  
CF24 SHE  
United Kingdom  
Tel: +44(0)29-20460231  
Fax: +44(0)29-20462173

**International**  
Tedea-Huntleigh International Ltd.  
2 Hozoran St.  
New Industrial Zone  
P.O. Box 8381, Netanya 42506  
Israel  
Tel: +972-9-863-8888  
Fax: +972-9-863-8800

**China**  
Beijing Tedea-Huntleigh  
No. 16 Hong Da Bei Lu  
Da Xing County, Beijing Economic & Technology Development Area,  
Beijing 100176  
Tel: +86-10-67881604-09  
Fax: +86-10-67881576

**Germany**  
Tedea-Huntleigh GmbH.  
Mumlingweg 18  
D-64297  
Darmstadt-Eberstadt  
Germany  
Tel: +49-6151-94460  
Fax: +49-6151-944640

**France**  
SEEA sa  
16 Rue Francis Vovelle  
28000 Chartres  
France  
Tel: +33-237-33-3120  
Fax: +33-237-3129

# Model 600 Series

# S-Type Load Cells

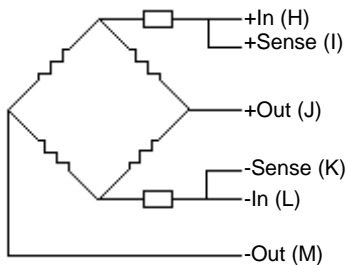
GRADE	E	F	G*	UNITS
Rated Capacity: 601	50, 100, 250, 500			kg
Rated Capacity: 616	100, 150, 200, 300, 500, 750, 1000			kg
Rated Output**	2 ± 0.10%			mV/V
Total Error***	1500	2000	3000	Divisions
Total Error	0.050	0.030	0.020	±% of Load
Creep at Rated Capacity / Zero Return After 30 Minutes	0.050	0.030	0.016	±% of Load
Zero Balance	10			±% of Rated Output
Temperature Range: Operating	-30 to +70			°C
Temperature Range: Compensated	-10 to +45			°C
Temperature Effect: On Output	0.0040	0.0015	0.0012	±% of Load / °C
Temperature Effect: On Zero	0.0080	0.0030	0.0027	±% of Rated Output / °C
Maximum Overload at the Center Loading Point	150			% of Rated Capacity
Ultimate Overload at the Center Loading Point	300			% of Rated Capacity
Excitation: Recommended	10			Volts AC or DC
Excitation: Maximum	15			Volts AC or DC
Input Impedance : 601 / 616	415 ± 15 / 385 ± 15			Ohms
Output Impedance	350 ± 3			Ohms
Insulation Resistance : 601 / 616	>1000 / >5000			Mega Ohms
Deflection at Rated Capacity	<0.4			mm
Weight: 601 / 616	0.41 / 0.58			kg
Construction: 601 / 616	Aluminum / Stainless Steel			
Cable: 601	3 Meter, 4 Conductor, PVC Jacket, Floating Shield			
Cable: 616	3 Meter, 6 Conductor, Polyurethane Jacket, Dual Floating Shield			
Environmental Protection	IP 65 / IP 67			
Approvals	OIML R60			

\* G Class available on Model 616 > 300 kg only

\*\* All accuracy specifications maintained when 150% of nominal load is applied for 3 mV/V output

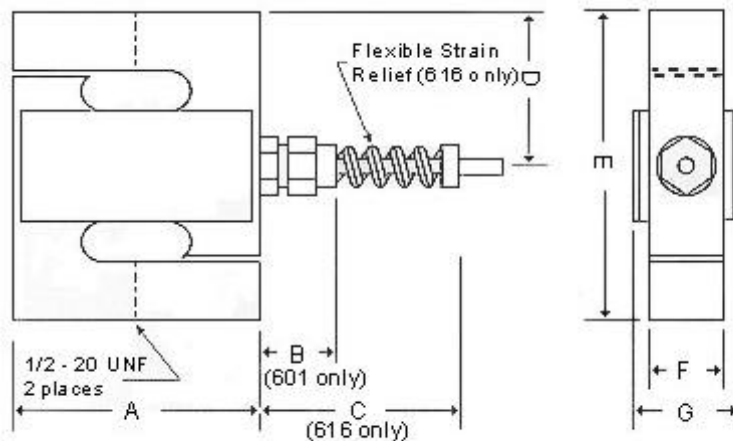
\*\*\* Nonlinearity, hysteresis, repeatability, and output temperature effect according to OIML R60 and NIST H-44

## Balanced Temperature Compensation



The two "sense" wires (616 only) sample the bridge supply voltage at the load cell. Complete compensation of change in the lead wire resistance, due to temperature change and/or cable extension, is achieved by feeding this voltage into appropriate electronics.

## Outline Dimensions All Capacities (in mm)



Dimensions

Model	601	616
A	2.75	2.50
B	0.80	--
C	--	2.04
D	1.50	1.57
E	3.00	3.15
F	1.00	0.75
G	1.35	1.08

Wiring Diagram

Model	601	616
H	Red	Green
I	--	Blue
J	Green	Red
K	--	Brown
L	Blue	Black
M	Yellow	White